

Recombinant Human Estrogen receptor/ESR1 Protein

Catalog No.: RP00815 **Recombinant**

Sequence Information

Species	Gene ID	Swiss Prot
Human	2099	P03372

Tags

N-His

Synonyms

ER; ESR; ESRA; ESTRR; Era;
NR3A1;ESR1;ESR α ;ESR;ESRA;ESTRR;Era;
NR3A1;ER alpha

Product Information

Source	Purification
<i>E. coli</i>	> 95% by SDS-PAGE.

Calculated MW	Observed MW
14.38 kDa	14 kDa

Endotoxin

< 1 EU/ μ g of the protein by LAL method.

Formulation

Lyophilized from a 0.2 μ M filtered solution of 20mM PB, 150mM NaCl, pH 7.2. Contact us for customized product form or formulation.

Reconstitution

Centrifuge the tube before opening. Reconstitute to a concentration of 0.1-0.5 mg/mL in sterile distilled water. Avoid vortex or vigorously pipetting the protein. For long term storage, it is recommended to add a carrier protein or stabilizer (e.g. 0.1% BSA, 5% HSA, 10% FBS or 5% Trehalose), and aliquot the reconstituted protein solution to minimize freeze-thaw cycles.

Contact

 | 400-999-6126

 | cn.market@abclonal.com.cn

 | www.abclonal.com.cn

Background

Estrogen Receptor is a major ligand-activated transcription factor belonging to the nuclear hormone receptor superfamily. Estrogen Receptor is composed of several domains important for hormone binding, DNA binding, and activation of transcription. The protein localizes to the nucleus where it may form a homodimer or a heterodimer with estrogen receptor 2. Estrogen and its receptors are essential for sexual development and reproductive function, but they also play a role in other tissues such as bone. Estrogen receptors are also involved in pathological processes including breast cancer, endometrial cancer, and osteoporosis. Alternative splicing results in several transcript variants, which differ in their 5' UTRs and use different promoters.

Basic Information

Description

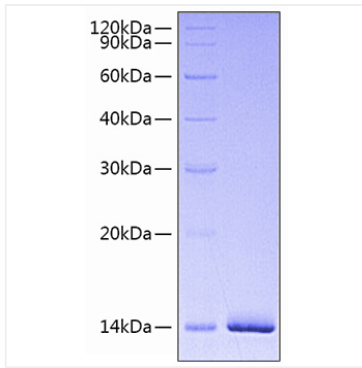
Recombinant Human Estrogen receptor/ESR1 Protein is produced by *E. coli* expression system. The target protein is expressed with sequence (Met1-Gln116) of human Estrogen Receptor (Accession #P03372) fused with a 6 \times His tag at the N-terminus.

Bio-Activity

Storage

Store at -20 $^{\circ}$ C. Store the lyophilized protein at -20 $^{\circ}$ C to -80 $^{\circ}$ C up to 1 year from the date of receipt. After reconstitution, the protein solution is stable at -20 $^{\circ}$ C for 3 months, at 2-8 $^{\circ}$ C for up to 1 week. Avoid repeated freeze/thaw cycles.

Validation Data



Recombinant Human Estrogen receptor/ESR1 Protein was determined by SDS-PAGE under reducing conditions with Coomassie Blue.