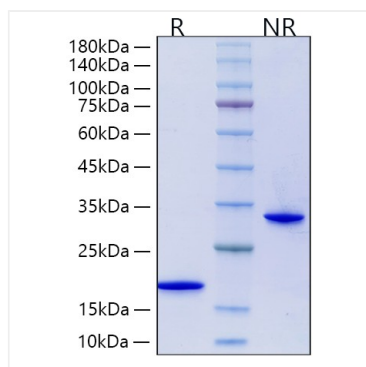


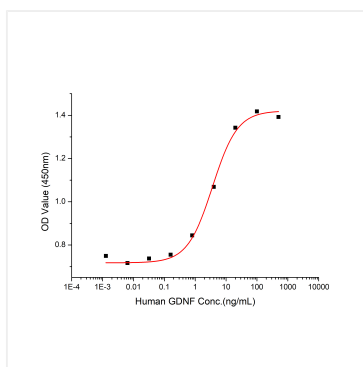
**Catalog No.: RP00835** **Recombinant**

\* □□□□□□□□□□□□□□□□□□□□□□□□□□□□

## Validation Data



Recombinant Human Mature GDNF Protein was determined by SDS-PAGE under reducing (R) and non-reducing (NR) conditions.



Measured in a cell proliferation assay using SH-SY5Y cells. The ED<sub>50</sub> for this effect is 1.82-7.26 ng/mL in the presence of Recombinant Human GFR alpha -1 (Catalog # RP01970), corresponding to a specific activity of  $1.38 \times 10^5 \sim 5.49 \times 10^5$  units/mg.