

# Recombinant Human INSL3/Insulin-like 3 Protein

Catalog No.: RP00915 **Recombinant**

## Sequence Information

Species	Gene ID	Swiss Prot
Human	3640	P51460

### Tags

C-6×His

### Synonyms

INSL3;RLF;RLNL;ley-I-L

## Product Information

Source	Purification
HEK293 cells	> 95% by SDS-PAGE.

### Endotoxin

< 1 EU/μg of the protein by LAL method.

### Formulation

Lyophilized from a 0.2 μm filtered solution of 20mM PB,150mM NaCl,pH7.4.Contact us for customized product form or formulation.

### Reconstitution

Reconstitute to a concentration of 0.1-0.5 mg/mL in sterile distilled water.

## Background

### Basic Information

#### Description

Recombinant Human INSL3/Insulin-like 3 Protein is produced by Human cells expression system. The target protein is expressed with sequence (Leu21-Tyr131) of human INSL3/Insulin-like 3 (Accession #P51460) fused with a 6×His tag at the C-terminus.

#### Bio-Activity

#### Storage

Store the lyophilized protein at -20°C to -80 °C for long term. After reconstitution, the protein solution is stable at -20 °C for 3 months, at 2-8 °C for up to 1 week. Avoid repeated freeze/thaw cycles.

## Contact

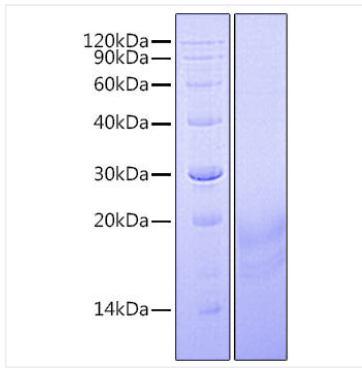
☎ | 400-999-6126

✉ | [cn.market@abclonal.com.cn](mailto:cn.market@abclonal.com.cn)

🌐 | [www.abclonal.com.cn](http://www.abclonal.com.cn)

## Validation Data

---



Recombinant Human INSL3/Insulin-like 3 Protein was determined by SDS-PAGE under reducing conditions with Coomassie Blue.