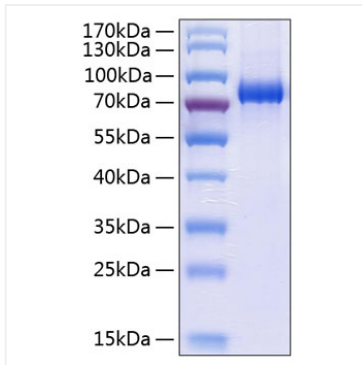


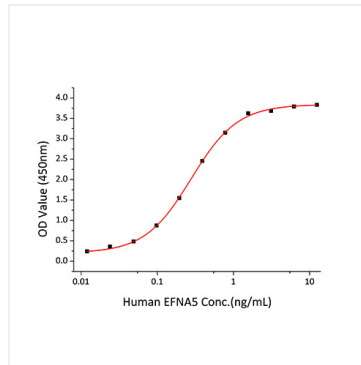


## Validation Data

---



Recombinant Human EphA3 Protein was determined by SDS-PAGE under reducing conditions with Coomassie Blue.



Immobilized Recombinant Human EFNA5 at 0.5  $\mu$ g/mL (100  $\mu$ L/well) can bind Human EPHA3 with a linear range of 0.01-0.3 ng/mL.