

Recombinant Human LAMP-1/CD107a Protein

Catalog No.: RP01027 **Recombinant**

Sequence Information

Species	Gene ID	Swiss Prot
Human	3916	P11279-1

Tags

C-His

Synonyms

LAMP1; CD107a; LAMPA; LGP120;
lysosomal associated membrane protein
1;CD107a;LAMPA;LGP120

Product Information

Source	Purification
HEK293 cells	> 97% by SDS-PAGE.

Endotoxin

< 0.1 EU/μg of the protein by LAL method.

Formulation

Lyophilized from a 0.22 μm filtered solution of PBS, pH 7.4. Contact us for customized product form or formulation.

Reconstitution

Centrifuge the vial before opening.
Reconstitute to a concentration of 0.1-0.5 mg/mL in sterile distilled water.
Avoid vortex or vigorously pipetting the protein. For long term storage, it is recommended to add a carrier protein or stabilizer (e.g. 0.1% BSA, 5% HSA, 10% FBS or 5% Trehalose), and aliquot the reconstituted protein solution to minimize free-thaw cycles.

Background

Lysosomal associated membrane protein 1 (LAMP1), also known as CD107a, is a single-pass type I membrane protein which belongs to the LAMP family. LAMP-1 is a glycoprotein highly expressed in lysosomal membranes. This glycoprotein provides selectins with carbohydrate ligands. It may also play a role in tumor cell metastasis. LAMP-1 acts as a receptor for Lassa virus protein. LAMP1 is presented on the plasma membrane during the activation of NK cells, CD8+ T cells, mast cells, basophils, monocytes, and platelets.

Basic Information

Description

Recombinant Human LAMP-1/CD107a Protein is produced by HEK293 cells expression system. The target protein is expressed with sequence (Ala29-Met382) of human LAMP1 (Accession #NP_005552.3) fused with a 6xHis tag at the C-terminus.

Bio-Activity

Measured by its binding ability in a functional ELISA. Immobilized Human LAMP1 at 1 μg/mL (100 μL/well) can bind LAMP1 Rabbit pAb with a linear range of 1-8.5 ng/mL.

Storage

Store the lyophilized protein at -20°C to -80 °C for long term.
After reconstitution, the protein solution is stable at -20 °C for 3 months, at 2-8 °C for up to 1 week.
Avoid repeated freeze/thaw cycles.

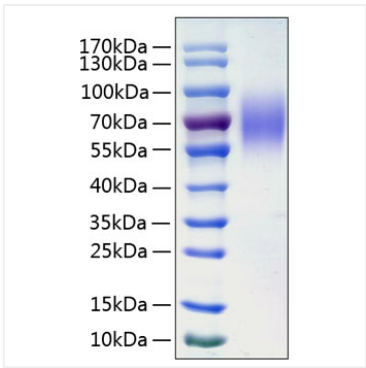
Contact

☎ | 400-999-6126

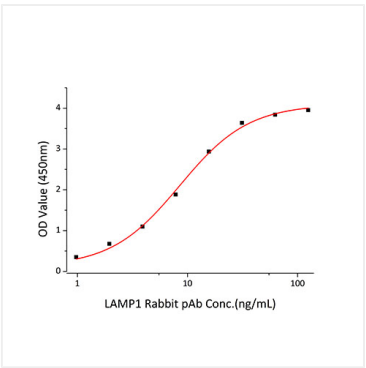
✉ | cn.market@abclonal.com.cn

🌐 | www.abclonal.com.cn

Validation Data



Recombinant Human LAMP-1/CD107a Protein was determined by SDS-PAGE with Coomassie Blue, showing a band at 60-95 kDa.



Immobilized recombinant Human LAMP1 at 1µg/mL (100 µL/well) can bind LAMP1 Rabbit pAb with a linear range of 1-8.5ng/mL.