

Recombinant Human Mesothelin/MSLN Protein

Catalog No.: RP01053 **Recombinant**

Sequence Information

| Species | Gene ID | Swiss Prot |
|---------|---------|------------|
| Human | 10232 | Q13421-3 |

Tags

C-His

Synonyms

MPF; SMRP;MSLN;SMRP

Product Information

| Source | Purification |
|--------------|--------------------|
| HEK293 cells | > 97% by SDS-PAGE. |

| Calculated MW | Observed MW |
|---------------|-------------|
| 33.07 kDa | 38-45kDa |

Endotoxin

< 0.1 EU/μg of the protein by LAL method.

Formulation

Lyophilized from a 0.22 μm filtered solution of PBS, pH 7.4. Contact us for customized product form or formulation.

Reconstitution

Centrifuge the vial before opening. Reconstitute to a concentration of 0.1-0.5 mg/mL in sterile distilled water. Avoid vortex or vigorously pipetting the protein. For long term storage, it is recommended to add a carrier protein or stabilizer (e.g. 0.1% BSA, 5% HSA, 10% FBS or 5% Trehalose), and aliquot the reconstituted protein solution to minimize free-thaw cycles.

Contact

 | 400-999-6126

 | cn.market@abclonal.com.cn

 | www.abclonal.com.cn

Background

Basic Information

Description

Recombinant Human Mesothelin/MSLN Protein is produced by HEK293 expression system. The target protein is expressed with sequence (Glu296-Gly580) of human Mesothelin (Accession #NP_005814.2) fused with a 6×His tag at the C-terminus.

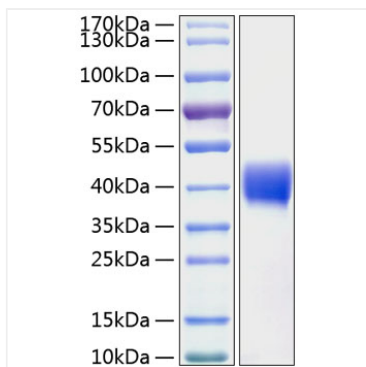
Bio-Activity

Measured by its binding ability in a functional ELISA. Immobilized Human Mesothelin/MSLN (Catalog: RP01053) at 2 μg/mL (100 μL/well) can bind Human CA125 (Catalog: RP01053) with a linear range of 0.1-10.4 ng/mL.

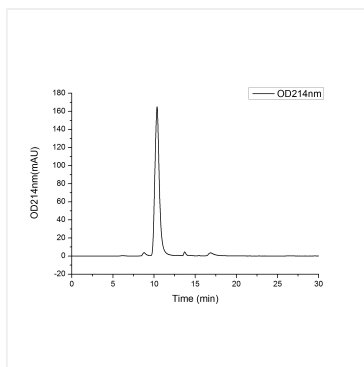
Storage

Store at -20°C. Store the lyophilized protein at -20°C to -80 °C up to 1 year from the date of receipt. After reconstitution, the protein solution is stable at -20°C for 3 months, at 2-8°C for up to 1 week. Avoid repeated freeze/thaw cycles.

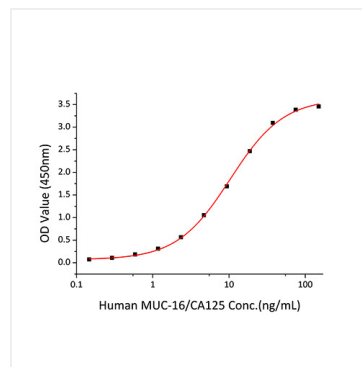
Validation Data



Recombinant Human Mesothelin/MSLN Protein was determined by SDS-PAGE with Coomassie Blue, showing a band at 38-45kDa.



The purity of Human Mesothelin Protein (Cat.RP01053) was greater than 95% as determined by SEC-HPLC.



Immobilized Human Mesothelin/MSLN at 2 $\mu\text{g/mL}$ (100 $\mu\text{L/well}$) can bind Human CA125 with a linear range of 0.1-10.4 ng/mL.