

Recombinant Mouse c-Kit ligand/KITLG/SCF Protein

Catalog No.: RP01055 **Recombinant**

Sequence Information

Species	Gene ID	Swiss Prot
Mouse	17311	P20826-1

Tags

C-His

Synonyms

KITLG;FPH2;KL-1;Kitl;MGF;SCF;SF;SHEP7;KL;SCF/KITLG

Product Information

Source	Purification
HEK293 cells	> 95% by SDS-PAGE.

Calculated MW	Observed MW
19.14 kDa	18-38 kDa

Endotoxin

< 0.1 EU/μg of the protein by LAL method.

Formulation

Lyophilized from a 0.22 μm filtered solution of PBS, pH 7.4. Contact us for customized product form or formulation.

Reconstitution

Centrifuge the vial before opening. Reconstitute to a concentration of 0.1-0.5 mg/mL in sterile distilled water. Avoid vortex or vigorously pipetting the protein. For long term storage, it is recommended to add a carrier protein or stabilizer (e.g. 0.1% BSA, 5% HSA, 10% FBS or 5% Trehalose), and aliquot the reconstituted protein solution to minimize free-thaw cycles.

Contact

☎ | 400-999-6126

✉ | cn.market@abclonal.com.cn

🌐 | www.abclonal.com.cn

Background

Basic Information

Description

Recombinant Mouse c-Kit ligand/KITLG/SCF Protein is produced by HEK293 expression system. The target protein is expressed with sequence (Lys26-Ala189) of mouse SCF (Accession #NP_038626.1.) fused with a 6×His tag at the C-terminus.

Bio-Activity

1. Measured in a cell proliferation assay using TF-1 human erythroleukemic cells. The ED₅₀ for this effect is 0.5-1.0 ng/mL, corresponding to a specific activity of 1.0×10⁶-2.0×10⁶ units/mg. | 2. Measured by its binding ability in a functional ELISA. Immobilized recombinant Mouse SCF at 2 μg/mL (100 μL/well) can bind recombinant human CD117 with a linear range of 1.5-10 ng/mL.

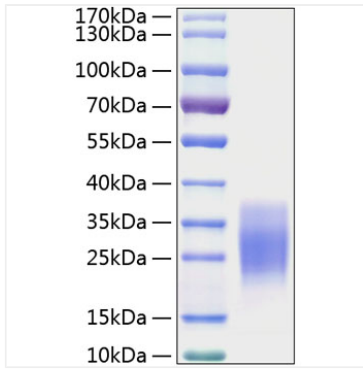
Storage

Store at -20°C. Store the lyophilized protein at -20°C to -80 °C up to 1 year from the date of receipt.

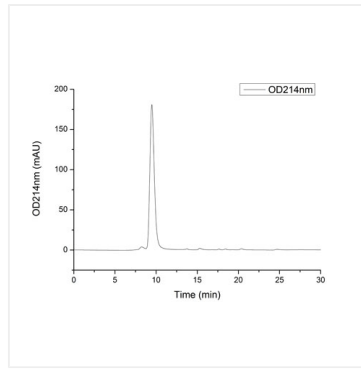
After reconstitution, the protein solution is stable at -20°C for 3 months, at 2-8°C for up to 1 week.

Avoid repeated freeze/thaw cycles.

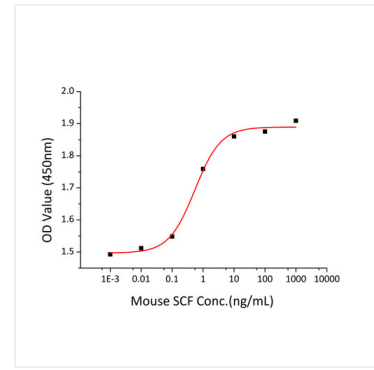
Validation Data



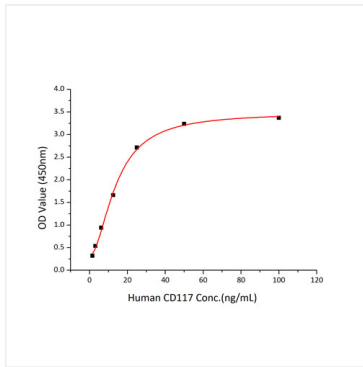
Recombinant Mouse c-Kit ligand/SCF/KITLG Protein was determined by SDS-PAGE with Coomassie Blue, showing a band at 18-38kDa.



The purity of Mouse SCF Protein (Cat.RP01055) was greater than 95% as determined by SEC-HPLC.



Recombinant Mouse SCF stimulates cell proliferation of the TF-1 human erythroleukemic cells. The ED₅₀ for this effect is 0.5-1.0 ng/mL, corresponding to a specific activity of 1.0×10^6 - 2.0×10^6 units/mg.



Immobilized recombinant Mouse SCF at 2 $\mu\text{g/mL}$ (100 $\mu\text{L/well}$) can bind recombinant human CD117 with a linear range of 1.5-10ng/mL.