

Recombinant Mouse P-Selectin/SELP/CD62P Protein

Catalog No.: RP01068 **Recombinant**

Sequence Information

Species	Gene ID	Swiss Prot
Mouse	20344	Q01102

Tags

C-hFc&His

Synonyms

P-Selectin;CD62P;SELP;GMP-140;SELP/P-selectin;P-Selectin;CD62P;SELP;GMP-140;SELP/P-selectin

Product Information

Source	Purification
HEK293 cells	> 95% by SDS-PAGE.

Calculated MW	Observed MW
99.35 kDa	130-150 kDa

Endotoxin

< 0.1 EU/μg of the protein by LAL method.

Formulation

Lyophilized from a 0.22 μm filtered solution of PBS, pH 7.4. Contact us for customized product form or formulation.

Reconstitution

Centrifuge the vial before opening. Reconstitute to a concentration of 0.1-0.5 mg/mL in sterile distilled water. Avoid vortex or vigorously pipetting the protein. For long term storage, it is recommended to add a carrier protein or stabilizer (e.g. 0.1% BSA, 5% HSA, 10% FBS or 5% Trehalose), and aliquot the reconstituted protein solution to minimize free-thaw cycles.

Contact

 | 400-999-6126

 | cn.market@abclonal.com.cn

 | www.abclonal.com.cn

Background

Basic Information

Description

Recombinant Mouse P-Selectin/SELP/CD62P Protein is produced by HEK293 expression system. The target protein is expressed with sequence (Trp42-Ala709) of mouse P-Selectin/CD62P (Accession #NP_035477.1.) fused with an Fc, 6×His tag at the C-terminus.

Bio-Activity

Measured by the ability of the immobilized protein to support the adhesion of U937 human histiocytic lymphoma cells. When 5 x 10E4 cells/well are added to mouse SELP/Fc Chimera coated plates (10 μg/mL, 100 μL/well), > 90% cells will adhere after 1 hour at 37°C.

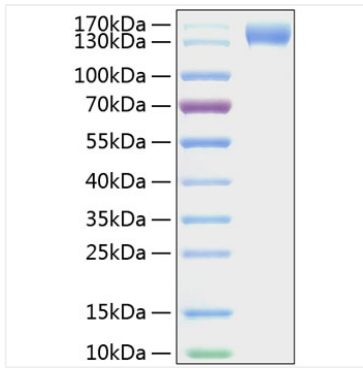
Storage

Store at -20°C. Store the lyophilized protein at -20°C to -80 °C up to 1 year from the date of receipt.

After reconstitution, the protein solution is stable at -20°C for 3 months, at 2-8°C for up to 1 week.

Avoid repeated freeze/thaw cycles.

Validation Data



Recombinant Mouse SELP/P-Selectin/CD62P Protein was determined by SDS-PAGE with Coomassie Blue, showing a band at 130-150kDa.