

# Recombinant Rat CCL2/MCP-1 Protein

Catalog No.: RP01073 **Recombinant**

## Sequence Information

Species	Gene ID	Swiss Prot
Rat	24770	P14844

### Tags

C-His

### Synonyms

C-C motif chemokine ligand  
2;CCL2;GDCF-2;HC11;HSMCR30;MCAF;Mcp1;MCP-1;SCYA2;SMC-CF;Ccl2/MCP1

## Product Information

Source	Purification
HEK293 cells	> 95% by SDS-PAGE.

### Endotoxin

< 0.1 EU/μg of the protein by LAL method.

### Formulation

Lyophilized from a 0.22 μm filtered solution of PBS, pH 7.4. Contact us for customized product form or formulation.

### Reconstitution

Centrifuge the vial before opening. Reconstitute to a concentration of 0.1-0.5 mg/mL in sterile distilled water. Avoid vortex or vigorously pipetting the protein. For long term storage, it is recommended to add a carrier protein or stabilizer (e.g. 0.1% BSA, 5% HSA, 10% FBS or 5% Trehalose), and aliquot the reconstituted protein solution to minimize free-thaw cycles.

## Contact

 | 400-999-6126

 | [cn.market@abclonal.com.cn](mailto:cn.market@abclonal.com.cn)

 | [www.abclonal.com.cn](http://www.abclonal.com.cn)

## Background

### Basic Information

#### Description

Recombinant Rat CCL2/MCP-1 Protein is produced by HEK293 cells expression system. The target protein is expressed with sequence (Gln24-Asn148) of rat CCL2/JE/MCP-1 (Accession #NP\_113718.1.) fused with a 6×His tag at the C-terminus.

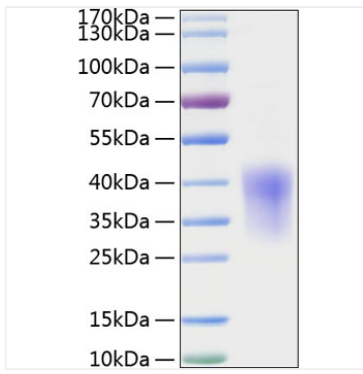
#### Bio-Activity

#### Storage

Store the lyophilized protein at -20°C to -80 °C for long term. After reconstitution, the protein solution is stable at -20 °C for 3 months, at 2-8 °C for up to 1 week. Avoid repeated freeze/thaw cycles.

## Validation Data

---



Recombinant Rat CCL2/MCP-1 Protein was determined by SDS-PAGE with Coomassie Blue, showing a band at 35-40 kDa.