

# Recombinant Human PMP2 Protein

Catalog No.: RP01086 **Recombinant**

## Sequence Information

Species	Gene ID	Swiss Prot
Human	5375	P02689

### Tags

N-His

### Synonyms

PMP2;FABP8;M-FABP;MP2;P2

## Product Information

Source	Purification
<i>E. coli</i>	> 95% by SDS-PAGE.

Calculated MW	Observed MW
17.07 kDa	14-20 kDa

### Endotoxin

< 1.0 EU/μg of the protein by LAL method.

### Formulation

Lyophilized from a 0.22 μm filtered solution of 20mM PB, 150mM NaCl, pH 7.2. Contact us for customized product form or formulation.

### Reconstitution

Centrifuge the tube before opening. Reconstitute to a concentration of 0.1-0.5 mg/mL in sterile distilled water. Avoid vortex or vigorously pipetting the protein. For long term storage, it is recommended to add a carrier protein or stabilizer (e.g. 0.1% BSA, 5% HSA, 10% FBS or 5% Trehalose), and aliquot the reconstituted protein solution to minimize freeze-thaw cycles.

## Contact

☎ | 400-999-6126

✉ | [cn.market@abclonal.com.cn](mailto:cn.market@abclonal.com.cn)

🌐 | [www.abclonal.com.cn](http://www.abclonal.com.cn)

## Background

This protein localizes to myelin sheaths of the peripheral nervous system. The encoded protein can bind both the membrane layers of the sheaths and monomeric lipids, and is thought to provide stability to the sheath. A defect in this gene was shown to be a cause of dominant demyelinating CMT neuropathy.

## Basic Information

### Description

Recombinant Human PMP2 Protein is produced by *E. coli* expression system. The target protein is expressed with sequence (Met1-Val132) of human PMP2 (Accession #P02689) fused with a 6×His tag at the N-terminus.

### Bio-Activity

#### Storage

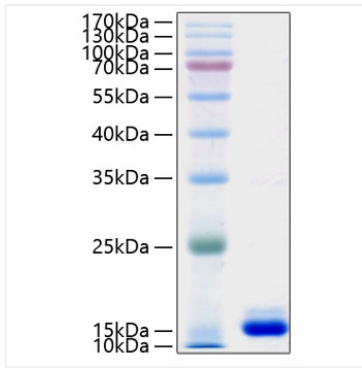
Store at -20°C. Store the lyophilized protein at -20°C to -80 °C up to 1 year from the date of receipt.

After reconstitution, the protein solution is stable at -20°C for 3 months, at 2-8°C for up to 1 week.

Avoid repeated freeze/thaw cycles.

## Validation Data

---



Recombinant Human PMP2 Protein was determined by SDS-PAGE with Coomassie Blue, showing a band at 16 kDa.