

# Recombinant Human IL-20RB Protein

Catalog No.: RP01102 **Recombinant**

## Sequence Information

Species	Gene ID	Swiss Prot
Human	53833	Q6UXL0

### Tags

C-Fc

### Synonyms

IL20RB;DIRS1;FNDC6;IL-20R2

## Product Information

Source	Purification
HEK293 cells	> 95% by SDS-PAGE.

Calculated MW	Observed MW
49.6 kDa	60-85 kDa

### Endotoxin

< 1.0 EU/μg of the protein by LAL method.

### Formulation

Supplied as a 0.22 μm filtered solution of PBS, pH 7.4. Contact us for customized product form or formulation.

### Reconstitution

Centrifuge the tube before opening. Reconstitute to a concentration of 0.1-0.5 mg/mL in sterile distilled water. Avoid vortex or vigorously pipetting the protein. For long term storage, it is recommended to add a carrier protein or stabilizer (e.g. 0.1% BSA, 5% HSA, 10% FBS or 5% Trehalose), and aliquot the reconstituted protein solution to minimize free-thaw cycles.

## Contact

 | 400-999-6126

 | [cn.market@abclonal.com.cn](mailto:cn.market@abclonal.com.cn)

 | [www.abclonal.com.cn](http://www.abclonal.com.cn)

## Background

IL20RB and IL20RA (MIM 605620) form a heterodimeric receptor for interleukin-20 (IL20; MIM 605619) (Blumberg et al., 2001 [PubMed 11163236]).

## Basic Information

### Description

Recombinant Human IL-20RB Protein is produced by Mammalian expression system. The target protein is expressed with sequence (Asp30-Ala230) of human IL-20RB (Accession #Q6UXL0) fused with an Fc tag at the C-terminus.

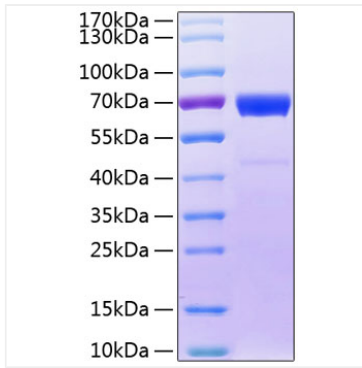
### Bio-Activity

### Storage

Store at -70°C. This product is stable at ≤ -70°C for up to 1 year from the date of receipt. For optimal storage, aliquot into smaller quantities after centrifugation and store at recommended temperature. Avoid repeated freeze-thaw cycles. Avoid repeated freeze/thaw cycles.

## Validation Data

---



Recombinant Human IL-20RB Protein was determined by SDS-PAGE with Coomassie Blue, showing a band at 60-85 kDa.