

Recombinant Human IGF1R/CD221 Protein

Catalog No.: RP01143 **Recombinant**

Sequence Information

Species	Gene ID	Swiss Prot
Human	3480	P08069

Tags

C-His

Synonyms

IGF1R;CD221;IGFIR;IGFR;JTK13

Product Information

Source	Purification
HEK293 cells	> 90 % by SDS-PAGE.

Calculated MW	Observed MW
81 kDa(α chain), 23 kDa(β chain), 104 kDa(single chain)	120 kDa (α chain), 48 kDa(β chain), 150 kDa(single chain),

Endotoxin

< 1.0 EU/μg of the protein by LAL method.

Formulation

Lyophilized from a 0.22 μm filtered solution PBS Buffer, pH 7.4. Contact us for customized product form or formulation.

Reconstitution

Centrifuge the vial before opening. Reconstitute to a concentration of 0.1-0.5 mg/mL in sterile distilled water. Avoid vortex or vigorously pipetting the protein. For long term storage, it is recommended to add a carrier protein or stabilizer (e.g. 0.1% BSA, 5% HSA, 10% FBS or 5% Trehalose), and aliquot the reconstituted protein solution to minimize freeze-thaw cycles.

Contact

☎ | 400-999-6126

Background

This receptor binds insulin-like growth factor with a high affinity. It has tyrosine kinase activity. The insulin-like growth factor I receptor plays a critical role in transformation events. Cleavage of the precursor generates alpha and beta subunits. It is highly overexpressed in most malignant tissues where it functions as an anti-apoptotic agent by enhancing cell survival. Alternatively spliced transcript variants encoding distinct isoforms have been found for this gene.

Basic Information

Description

Recombinant Human IGF1R/CD221 Protein is produced by HEK293 cells expression system. The target protein is expressed with sequence (Met1-Asn932) of human IGF1R (Accession #NP_000866.1) fused with a 6×His tag at the C-terminus.

Bio-Activity

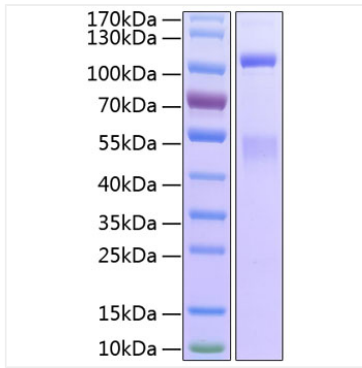
Storage

Store at -20°C. Store the lyophilized protein at -20°C to -80 °C up to 1 year from the date of receipt. After reconstitution, the protein solution is stable at -20°C for 3 months, at 2-8°C for up to 1 week. Avoid repeated freeze/thaw cycles.

✉ | cn.market@abclonal.com.cn

🌐 | www.abclonal.com.cn

Validation Data



Recombinant Human IGF1R/CD221 Protein was determined by SDS-PAGE with Coomassie Blue, showing three bands at approximately 150 kDa, 120 kDa and 48 kDa.