

Recombinant Mouse EphB2 Protein

Catalog No.: RP01156 **Recombinant**

Sequence Information

Species	Gene ID	Swiss Prot
Mouse	13844	P54763-3

Tags

C-His

Synonyms

CAPB;DRT;EK5;EPHT3;ERK;Hek5;PCBC;Tyro5;Tyrosine-protein kinase receptor EPH-3;Tyrosine-protein kinase receptor SEK-3;EPHB2;CAPB;DRT;EK5;EPHT3;ERK;Hek5;PCBC;Tyro5;Tyrosine-protein kinase receptor EPH-3;Tyrosine-protein kinase receptor SEK-3;EPHB2

Product Information

Source	Purification
HEK293 cells	> 97% by SDS-PAGE.

Endotoxin

< 0.1 EU/μg of the protein by LAL method.

Formulation

Lyophilized from a 0.22 μm filtered solution of PBS, pH 7.4. Contact us for customized product form or formulation.

Reconstitution

Centrifuge the vial before opening. Reconstitute to a concentration of 0.1-0.5 mg/mL in sterile distilled water. Avoid vortex or vigorously pipetting the protein. For long term storage, it is recommended to add a carrier protein or stabilizer (e.g. 0.1% BSA, 5% HSA, 10% FBS or 5% Trehalose), and aliquot the reconstituted protein solution to minimize freeze-thaw cycles.

Contact

 | 400-999-6126

 | cn.market@abclonal.com.cn

 | www.abclonal.com.cn

Background

Basic Information

Description

Recombinant Mouse EphB2 Protein is produced by HEK293 cells expression system. The target protein is expressed with sequence (Met1-Lys540) of mouse EphB2 (Accession #NP_034272.1) fused with a 6×His tag at the C-terminus.

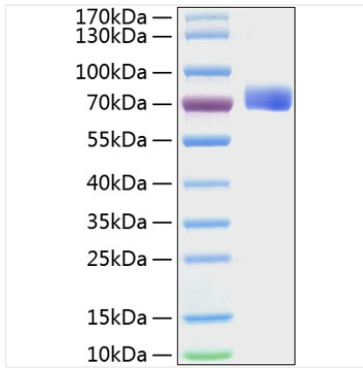
Bio-Activity

1. Measured by its binding ability in a functional ELISA. Immobilized Mouse EphB2 (Catalog: RP01156) at 2 μg/mL (100 μL/well) can bind Mouse Ephrin B2 with a linear range of 0.12-0.92 ng/mL.

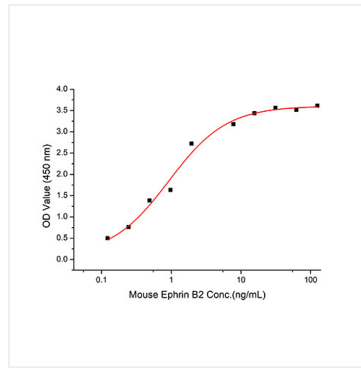
Storage

Store at -20°C. Store the lyophilized protein at -20°C to -80 °C up to 1 year from the date of receipt. After reconstitution, the protein solution is stable at -20°C for 3 months, at 2-8°C for up to 1 week. Avoid repeated freeze/thaw cycles.

Validation Data



Recombinant Mouse EphB2 Protein was determined by SDS-PAGE with Coomassie Blue, showing a band at 70-75 kDa..



Immobilized Mouse EphB2 (Catalog: RP01156) at 2 μ g/mL (100 μ L/well) can bind Mouse Ephrin B2 with a linear range of 0.12-0.92 ng/mL.