

Recombinant Human B7-H2/ICOSLG/CD275 Protein

Catalog No.: RP01163 **Recombinant**

Sequence Information

Species	Gene ID	Swiss Prot
Human	23308	O75144-1

Tags

C-His

Synonyms

ICOSLG;B7-H2;B7H2;B7RP-1;B7RP1;CD275;GL50;ICOS-L;ICOSL;LICOS

Product Information

Source	Purification
HEK293 cells	> 90% by SDS-PAGE.

Calculated MW	Observed MW
27.53 kDa	45-67 kDa

Endotoxin

< 0.1 EU/μg of the protein by LAL method.

Formulation

Lyophilized from a 0.22 μm filtered solution of PBS, pH 7.4. Contact us for customized product form or formulation.

Reconstitution

Centrifuge the vial before opening. Reconstitute to a concentration of 0.1-0.5 mg/mL in sterile distilled water. Avoid vortex or vigorously pipetting the protein. For long term storage, it is recommended to add a carrier protein or stabilizer (e.g. 0.1% BSA, 5% HSA, 10% FBS or 5% Trehalose), and aliquot the reconstituted protein solution to minimize free-thaw cycles.

Contact

 | 400-999-6126

 | cn.market@abclonal.com.cn

 | www.abclonal.com.cn

Background

Basic Information

Description

Recombinant Human B7-H2/ICOSLG/CD275 Protein is produced by HEK293 cells expression system. The target protein is expressed with sequence (Asp19-Ser258) of human B7-H2/ICOSLG (Accession #NP_056074.1) fused with a 6xHis tag at the C-terminus.

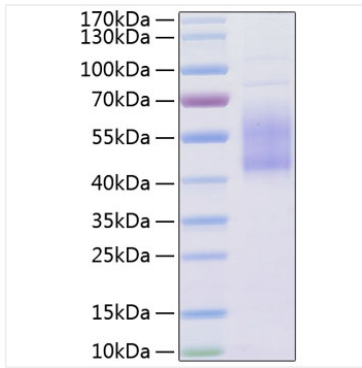
Bio-Activity

Measured by its binding ability in a functional ELISA. Immobilized Human B7-H2/ICOSLG at 1 μg/mL (100 μL/well) can bind Human ICOS/CD278 with a linear range of 2-14.8 ng/mL.

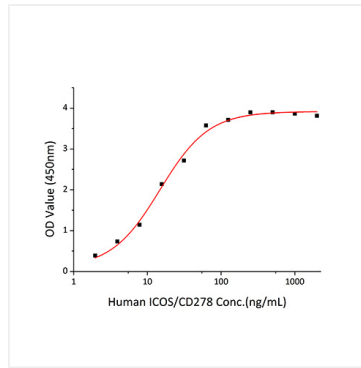
Storage

Store at -20°C. Store the lyophilized protein at -20°C to -80 °C up to 1 year from the date of receipt. After reconstitution, the protein solution is stable at -20°C for 3 months, at 2-8°C for up to 1 week. Avoid repeated freeze/thaw cycles.

Validation Data



Recombinant Human B7-H2/ICOSLG/CD275 Protein was determined by SDS-PAGE with Coomassie Blue, showing a band at 45-67 kDa.



Immobilized Recombinant Human B7-H2/ICOSLG at 1 $\mu\text{g/mL}$ (100 $\mu\text{L/well}$) can bind Human ICOS/CD278 with a linear range of 2-14.8 ng/mL.