

# Recombinant Mouse ErbB-2/HER2/CD340 Protein

Catalog No.: RP01166 **Recombinant**

## Sequence Information

Species	Gene ID	Swiss Prot
Mouse	13866	P70424

### Tags

C-hFc&His

### Synonyms

CD340;c-erbB2;c-neu;ErbB-2;HER-2;HER2;Neu;HER2/ERBB2;CD340;c-erbB2;c-neu;ErbB-2;HER-2;HER2;Neu;HER2/ERBB2

## Product Information

Source	Purification
HEK293 cells	> 97% by SDS-PAGE.

### Endotoxin

< 0.1 EU/μg of the protein by LAL method.

### Formulation

Lyophilized from a 0.22 μm filtered solution of PBS, pH 7.4. Contact us for customized product form or formulation.

### Reconstitution

Centrifuge the vial before opening. Reconstitute to a concentration of 0.1-0.5 mg/mL in sterile distilled water. Avoid vortex or vigorously pipetting the protein. For long term storage, it is recommended to add a carrier protein or stabilizer (e.g. 0.1% BSA, 5% HSA, 10% FBS or 5% Trehalose), and aliquot the reconstituted protein solution to minimize free-thaw cycles.

## Background

## Basic Information

### Description

Recombinant Mouse ErbB-2/HER2/CD340 Protein is produced by HEK293 cells expression system. The target protein is expressed with sequence (Thr23-Thr653) of mouse HER2/ErbB2 (Accession #NP\_001003817.1) fused with an Fc, 6×His tag at the C-terminus.

### Bio-Activity

Measured by its binding ability in a functional ELISA. Immobilized Human ErbB2 at 1 μg/mL (100 μL/well) can bind ErbB2 Rabbit pAb with a linear range of 0.06-1 ng/mL.

### Storage

Store the lyophilized protein at -20°C to -80 °C for long term.

After reconstitution, the protein solution is stable at -20 °C for 3 months, at 2-8 °C for up to 1 week.

Avoid repeated freeze/thaw cycles.

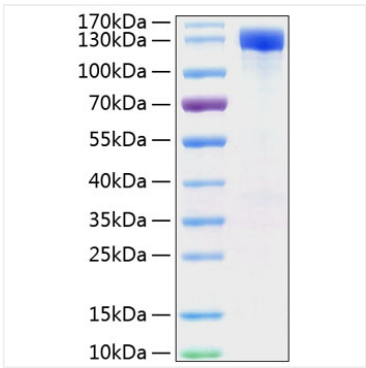
## Contact

 | 400-999-6126

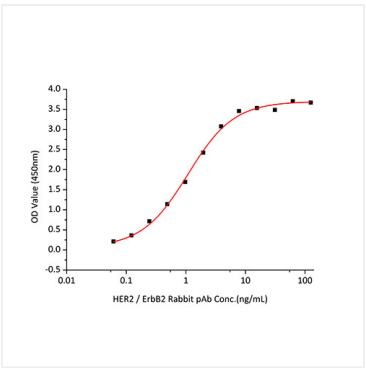
 | [cn.market@abclonal.com.cn](mailto:cn.market@abclonal.com.cn)

 | [www.abclonal.com.cn](http://www.abclonal.com.cn)

# Validation Data



Recombinant Mouse ErbB-2/HER2/CD340 Protein was determined by SDS-PAGE with Coomassie Blue, showing a band at 120-140 kDa..



Immobilized Human ErbB2 at 1 µg/mL (100 µL/well) can bind ErbB2 Rabbit pAb with a linear range of 0.06-1 ng/mL.