

# Recombinant Human CD3 epsilon Protein

Catalog No.: RP01178 **Recombinant**

## Sequence Information

Species	Gene ID	Swiss Prot
Human	916	P07766

### Tags

C-His

### Synonyms

CD3E;IMD18;T3E;TCRE;CD3e molecule

## Product Information

Source	Purification
HEK293 cells	> 90% by SDS-PAGE.

Calculated MW	Observed MW
15.00 kDa	18-20 kDa

### Endotoxin

< 1.0 EU/μg of the protein by LAL method.

### Formulation

Lyophilized from a 0.22 μm filtered solution of PBS, pH 7.4. Contact us for customized product form or formulation.

### Reconstitution

Centrifuge the vial before opening. Reconstitute to a concentration of 0.1-0.5 mg/mL in sterile distilled water. Avoid vortex or vigorously pipetting the protein. For long term storage, it is recommended to add a carrier protein or stabilizer (e.g. 0.1% BSA, 5% HSA, 10% FBS or 5% Trehalose), and aliquot the reconstituted protein solution to minimize free-thaw cycles.

## Contact

 | 400-999-6126

 | [cn.market@abclonal.com.cn](mailto:cn.market@abclonal.com.cn)

 | [www.abclonal.com.cn](http://www.abclonal.com.cn)

## Background

### Basic Information

#### Description

Recombinant Human CD3 epsilon Protein is produced by HEK293 cells expression system. The target protein is expressed with sequence (Met1-Asp126) of Human CD3 epsilon (Accession #NP\_000724.1) fused with a 6×His tag at the C-terminus.

#### Bio-Activity

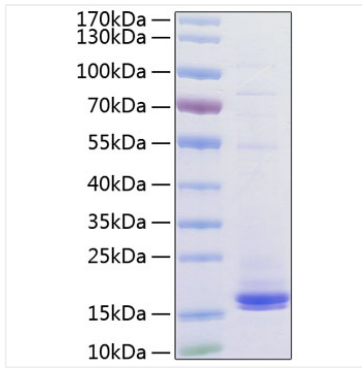
Measured by its binding ability in a functional ELISA. Immobilized Anti-CD3 epsilon/CD3e Antibody at 1:3000 (100 μL/well) can bind recombinant Human CD3E, the EC<sub>50</sub> of Human CD3E is 0.48 ng/mL.

#### Storage

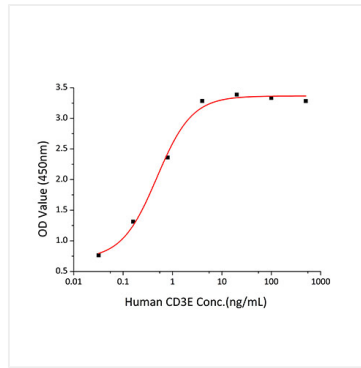
Store at -20°C. Store the lyophilized protein at -20°C to -80 °C up to 1 year from the date of receipt. After reconstitution, the protein solution is stable at -20°C for 3 months, at 2-8°C for up to 1 week. Avoid repeated freeze/thaw cycles.

## Validation Data

---



Active Recombinant Human CD3 epsilon/CD3E Protein was determined by SDS-PAGE with Coomassie Blue, showing a band at 18-20 kDa..



Immobilized Anti-CD3 epsilon/CD3e Antibody at 1:3000 (100µL/well) can bind recombinant Human CD3E, the EC<sub>50</sub> of Human CD3E is 0.48ng/mL.