

Recombinant Human TNFRSF3/TNFR-III/LTBR Protein

Catalog No.: RP01179 **Recombinant**

Sequence Information

Species	Gene ID	Swiss Prot
Human	4055	P36941

Tags

C-hFc&His

Synonyms

LTBR;CD18;D12S370;LT-BETA-R;TNF-R-III;TNFCR;TNFR-RP;TNFR2-RP;TNFR3;TNFRSF3

Product Information

Source	Purification
HEK293 cells	> 95% by SDS-PAGE.

Calculated MW	Observed MW
48.54 kDa	55-60 kDa

Endotoxin

< 0.1 EU/μg of the protein by LAL method.

Formulation

Lyophilized from a 0.22 μm filtered solution of PBS, pH 7.4. Contact us for customized product form or formulation.

Reconstitution

Centrifuge the vial before opening. Reconstitute to a concentration of 0.1-0.5 mg/mL in sterile distilled water. Avoid vortex or vigorously pipetting the protein. For long term storage, it is recommended to add a carrier protein or stabilizer (e.g. 0.1% BSA, 5% HSA, 10% FBS or 5% Trehalose), and aliquot the reconstituted protein solution to minimize free-thaw cycles.

Contact

 | 400-999-6126

 | cn.market@abclonal.com.cn

 | www.abclonal.com.cn

Background

Basic Information

Description

Recombinant Human TNFRSF3/TNFR-III/LTBR Protein is produced by HEK293 cells expression system. The target protein is expressed with sequence (Gln31-Met227) of human LTBR/TNFRSF3 (Accession #NP_002333.1) fused with an Fc, 6×His tag at the C-terminus.

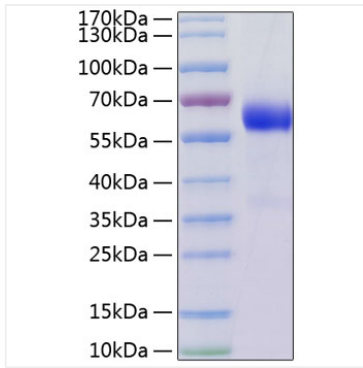
Bio-Activity

Measured by its binding ability in a functional ELISA. Immobilized Recombinant Human LIGHT at 1 μg/mL (100 μL/well) can bind Recombinant Human LTBR with a linear range of 14.3-57.4 ng/mL.

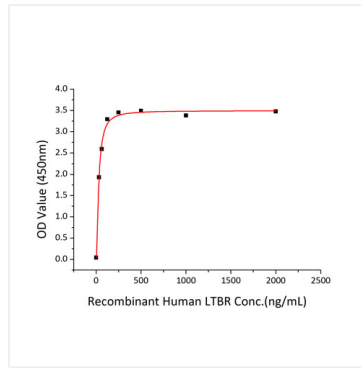
Storage

Store at -20°C. Store the lyophilized protein at -20°C to -80 °C up to 1 year from the date of receipt. After reconstitution, the protein solution is stable at -20°C for 3 months, at 2-8°C for up to 1 week. Avoid repeated freeze/thaw cycles.

Validation Data



Recombinant Human TNFRSF3/TNFR-III/LTBR Protein was determined by SDS-PAGE with Coomassie Blue, showing a band at 55-60 kDa..



Immobilized Recombinant Human LIGHT at 1 μ g/mL (100 μ L/well) can bind Recombinant Human LTBR with a linear range of 14.3-57.4 ng/mL.