

Recombinant Human CADM1/IGSF4A Protein

Catalog No.: RP01204 **Recombinant**

Sequence Information

Species	Gene ID	Swiss Prot
Human	23705	Q9BY67

Tags

C-His

Synonyms

CADM1;BL2;IGSF4;IGSF4A;NECL2;Necl-2;
RA175;ST17;SYNCAM;TSLC1;sTSLC-1;sgl
GSF;synCAM1

Product Information

Source	Purification
HEK293 cells	> 97% by SDS- PAGE.

Endotoxin

< 0.1 EU/μg of the protein by LAL method.

Formulation

Lyophilized from a 0.22 μm filtered solution of PBS, pH 7.4. Contact us for customized product form or formulation.

Reconstitution

Centrifuge the vial before opening. Reconstitute to a concentration of 0.1-0.5 mg/mL in sterile distilled water. Avoid vortex or vigorously pipetting the protein. For long term storage, it is recommended to add a carrier protein or stabilizer (e.g. 0.1% BSA, 5% HSA, 10% FBS or 5% Trehalose), and aliquot the reconstituted protein solution to minimize free-thaw cycles.

Contact

 | 400-999-6126

 | cn.market@abclonal.com.cn

 | www.abclonal.com.cn

Background

Basic Information

Description

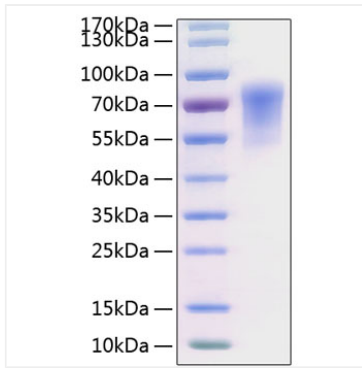
Recombinant Human CADM1/IGSF4A Protein is produced by HEK293 cells expression system. The target protein is expressed with sequence (Gln45-His374) of human CADM1/IGSF4A (Accession #NP_055148.3) fused with a 6xHis tag at the C-terminus.

Bio-Activity

Storage

Store the lyophilized protein at -20°C to -80 °C for long term. After reconstitution, the protein solution is stable at -20 °C for 3 months, at 2-8 °C for up to 1 week. Avoid repeated freeze/thaw cycles.

Validation Data



Recombinant Human CADM1/IGSF4A Protein was determined by SDS-PAGE with Coomassie Blue, showing a band at 50-80 kDa.