

Recombinant Rat CSF-2/GM-CSF Protein

Catalog No.: RP01207 **Recombinant**

Sequence Information

Species	Gene ID	Swiss Prot
Rat	116630	P48750

Tags

N-His

Synonyms

GMCSF;CSF2

Product Information

Source	Purification
HEK293 cells	> 97% by SDS-PAGE.

Endotoxin

< 1.0 EU/μg of the protein by LAL method.

Formulation

Lyophilized from a 0.22 μm filtered solution of PBS, pH 7.4. Contact us for customized product form or formulation.

Reconstitution

Centrifuge the vial before opening. Reconstitute to a concentration of 0.1-0.5 mg/mL in sterile distilled water. Avoid vortex or vigorously pipetting the protein. For long term storage, it is recommended to add a carrier protein or stabilizer (e.g. 0.1% BSA, 5% HSA, 10% FBS or 5% Trehalose), and aliquot the reconstituted protein solution to minimize freeze-thaw cycles.

Background

Basic Information

Description

Recombinant Rat CSF-2/GM-CSF Protein is produced by HEK293 cells expression system. The target protein is expressed with sequence (Ala18-Lys144) of rat GM-CSF/CSF2 (Accession #NP_446304.1.) fused with a 6xHis tag at the N-terminus.

Bio-Activity

Measured in a cell proliferation assay using SP2/O mouse myeloma cells. The ED₅₀ for this effect is 7.5-30 pg/mL.

Storage

Store the lyophilized protein at -20°C to -80 °C for long term.

After reconstitution, the protein solution is stable at -20 °C for 3 months, at 2-8 °C for up to 1 week.

Avoid repeated freeze/thaw cycles.

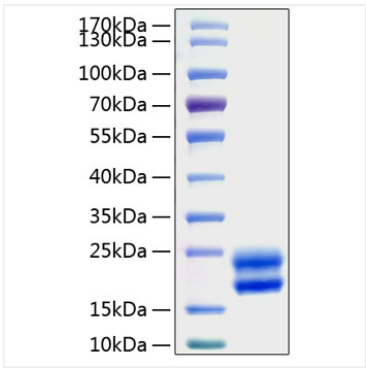
Contact

 | 400-999-6126

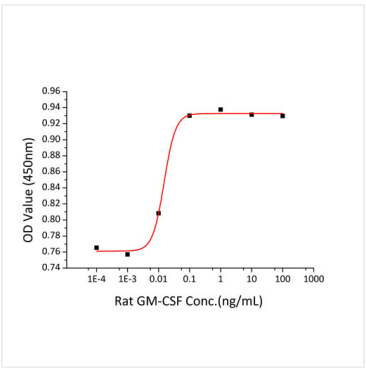
 | cn.market@abclonal.com.cn

 | www.abclonal.com.cn

Validation Data



Recombinant Rat CSF-2/GM-CSF Protein was determined by SDS-PAGE with Coomassie Blue, showing bands at 20 kDa and 23 kDa.



Recombinant Rat GM-CSF/CSF2 promotes the proliferation of SP2/O mouse myeloma cells. The ED₅₀ for this effect is 7.5-30 pg/mL.