

# Recombinant Human Mesothelin/MSLN Protein

Catalog No.: RP01220 **Recombinant**

## Sequence Information

Species	Gene ID	Swiss Prot
Human	10232	Q13421-3

### Tags

C-hFc&His

### Synonyms

MPF; SMRP;MSLN;SMRP

## Product Information

Source	Purification
HEK293 cells	> 97% by SDS-PAGE.

Calculated MW	Observed MW
59.02 kDa	68-85 kDa

### Endotoxin

< 0.1 EU/μg of the protein by LAL method.

### Formulation

Lyophilized from a 0.22 μm filtered solution of PBS, pH 7.4. Contact us for customized product form or formulation.

### Reconstitution

Centrifuge the vial before opening. Reconstitute to a concentration of 0.1-0.5 mg/mL in sterile distilled water. Avoid vortex or vigorously pipetting the protein. For long term storage, it is recommended to add a carrier protein or stabilizer (e.g. 0.1% BSA, 5% HSA, 10% FBS or 5% Trehalose), and aliquot the reconstituted protein solution to minimize free-thaw cycles.

## Contact

 | 400-999-6126

 | [cn.market@abclonal.com.cn](mailto:cn.market@abclonal.com.cn)

 | [www.abclonal.com.cn](http://www.abclonal.com.cn)

## Background

### Basic Information

#### Description

Recombinant Human Mesothelin/MSLN Protein is produced by HEK293 cells expression system. The target protein is expressed with sequence (Glu296-Gly580) of human Mesothelin (Accession #NP\_005814.2) fused with a Fc, 6×His tag at the C-terminus.

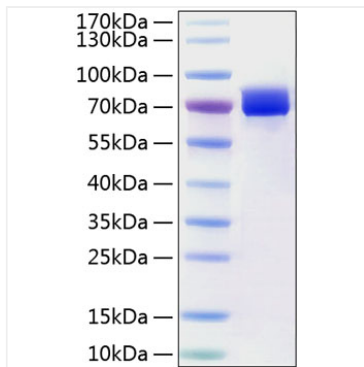
#### Bio-Activity

Loaded Human Mesothelin/MSLN Protein, C-hFc&His (Catalog: RP01220) on ProA Biosensor, can bind Human CA125 Protein, C-His&Avi (Catalog: RP01417) with an affinity constant of 17.2 nM as determined in BLI assay (Gator).

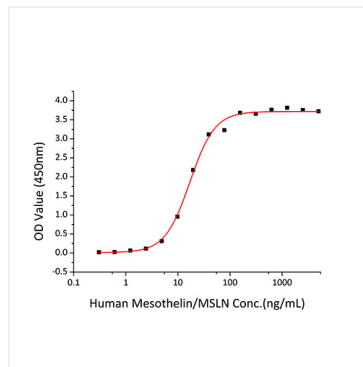
#### Storage

Store at -20°C. Store the lyophilized protein at -20°C to -80 °C up to 1 year from the date of receipt. After reconstitution, the protein solution is stable at -20°C for 3 months, at 2-8°C for up to 1 week. Avoid repeated freeze/thaw cycles.

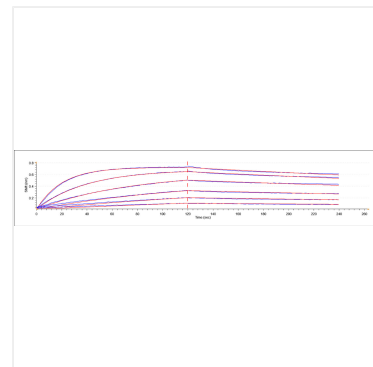
## Validation Data



Recombinant Human Mesothelin/MSLN Protein was determined by SDS-PAGE with Coomassie Blue, showing a band at 66-85 kDa.



Immobilized Human CA125 at 5  $\mu$ g/mL (100  $\mu$ L/well) can bind Human Mesothelin/MSLN with a linear range of 0.3-17 ng/mL.



Loaded Human Mesothelin/MSLN Protein, C-hFc&His (Catalog: RP01220) on ProA Biosensor, can bind Human CA125 Protein, C-His&Avi (Catalog: RP01417) with an affinity constant of 17.2 nM as determined in BLI assay (Gator).