

Recombinant Human CD8a Protein

Catalog No.: RP01245 **Recombinant**

Sequence Information

Species	Gene ID	Swiss Prot
Human	925	P01732

Tags

C-hFc&His

Synonyms

CD8; Leu2; MAL;
p32;CD8A;Leu2;MAL;p32

Product Information

Source	Purification
HEK293 cells	> 95% by SDS-PAGE.

Calculated MW	Observed MW
44.40 kDa	55-60 kDa

Endotoxin

< 0.1 EU/μg of the protein by LAL method.

Formulation

Lyophilized from a 0.22 μm filtered solution of PBS, pH 7.4. Contact us for customized product form or formulation.

Reconstitution

Centrifuge the vial before opening. Reconstitute to a concentration of 0.1-0.5 mg/mL in sterile distilled water. Avoid vortex or vigorously pipetting the protein. For long term storage, it is recommended to add a carrier protein or stabilizer (e.g. 0.1% BSA, 5% HSA, 10% FBS or 5% Trehalose), and aliquot the reconstituted protein solution to minimize free-thaw cycles.

Contact

☎ | 400-999-6126

✉ | cn.market@abclonal.com.cn

🌐 | www.abclonal.com.cn

Background

Basic Information

Description

Recombinant Human CD8a Protein is produced by HEK293 cells expression system. The target protein is expressed with sequence (Ser22-Asp182) of human CD8 alpha (Accession #NP_001759.3) fused with a Fc, 6×His tag at the C-terminus.

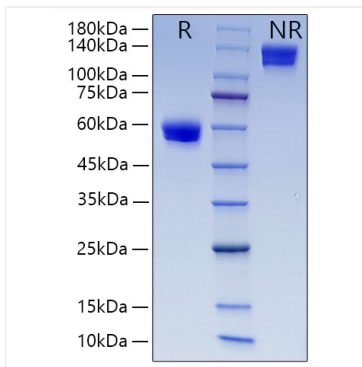
Bio-Activity

Measured by its binding ability in a functional ELISA. Immobilized Human CD8a at 2μg/mL (100 μL/well) can bind anti Human CD8a antibody with a linear range of 0.1-27.6ng/mL.

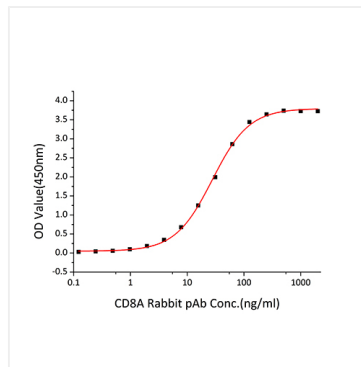
Storage

Store at -20°C. Store the lyophilized protein at -20°C to -80 °C up to 1 year from the date of receipt. After reconstitution, the protein solution is stable at -20°C for 3 months, at 2-8°C for up to 1 week. Avoid repeated freeze/thaw cycles.

Validation Data



Recombinant Human CD8a Protein was resolved with SDS PAGE under reducing (R) and non-reducing (NR) conditions, showing single bands at 55-60 kDa and 110-140 kDa, respectively.



Immobilized Human CD8a at 2 μ g/mL (100 μ L/well) can bind anti Human CD8a antibody with a linear range of 0.1-27.6ng/mL.