

# Recombinant Human TET2 Protein

Catalog No.: RP01247LQ **Recombinant** **1 Publications**

## Sequence Information

Species	Gene ID	Swiss Prot
Human	54790	Q6N021-1

### Tags

Please contact us for more information.

### Synonyms

MDS; KIAA1546;TET2;KIAA1546

## Product Information

Source	Purification
HEK293 cells	> 90% by SDS-PAGE.

Calculated MW	Observed MW
52.17 kDa	60-65 kDa

### Endotoxin

Please contact us for more information.

### Formulation

Supplied as a 0.22  $\mu$ m filtered solution in 50mM HEPES,300mM NaCl,1mM TCEP,10% Glycerol,pH 8.0.Contact us for customized product form or formulation.

### Reconstitution

## Background

### Basic Information

#### Description

Recombinant Human TET2 Protein is produced by HEK293 cells expression system.

#### Bio-Activity

#### Storage

Store at -70°C. This product is stable at  $\leq$  -70°C for up to 1 year from the date of receipt. For optimal storage, aliquot into smaller quantities after centrifugation and store at recommended temperature. Avoid repeated freeze-thaw cycles. Avoid repeated freeze/thaw cycles.

## Contact

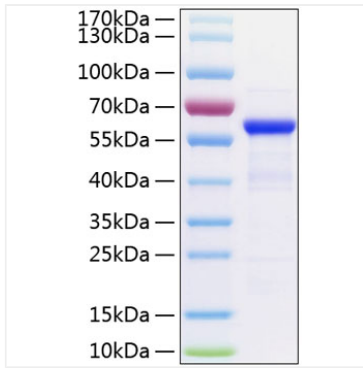
 | 400-999-6126

 | [cn.market@abclonal.com.cn](mailto:cn.market@abclonal.com.cn)

 | [www.abclonal.com.cn](http://www.abclonal.com.cn)

## Validation Data

---



Recombinant Human TET2 Protein was determined by SDS-PAGE with Coomassie Blue, showing a band at 60-65 kDa.