

# Recombinant Human Leptin receptor/LEP-R/CD295 Protein

Catalog No.: RP01248 **Recombinant**

## Sequence Information

Species	Gene ID	Swiss Prot
Human	3953	P48357

### Tags

C-hFc&His

### Synonyms

CD295;LEP-R;LEPRD;OB-R;OBR;LEPR

## Product Information

Source	Purification
HEK293 cells	> 95% by SDS-PAGE.

Calculated MW	Observed MW
120.46 kDa	170-190 kDa

### Endotoxin

< 1.0 EU/μg of the protein by LAL method.

### Formulation

Lyophilized from a 0.22 μm filtered solution of 50mM MES, 100mM NaCl, 1mM DTT, pH6.5. Contact us for customized product form or formulation.

### Reconstitution

Centrifuge the vial before opening. Reconstitute to a concentration of 0.1-0.5 mg/mL in sterile distilled water. Avoid vortex or vigorously pipetting the protein. For long term storage, it is recommended to add a carrier protein or stabilizer (e.g. 0.1% BSA, 5% HSA, 10% FBS or 5% Trehalose), and aliquot the reconstituted protein solution to minimize free-thaw cycles.

## Contact

☎ | 400-999-6126

✉ | [cn.market@abclonal.com.cn](mailto:cn.market@abclonal.com.cn)

🌐 | [www.abclonal.com.cn](http://www.abclonal.com.cn)

## Background

### Basic Information

#### Description

Recombinant Human Leptin receptor/LEP-R/CD295 Protein is produced by HEK293 cells expression system. The target protein is expressed with sequence (Thr20-Asp839) of human Leptin R/CD295 (Accession #NP\_002294.2) fused with a Fc, 6xHis tag at the C-terminus.

#### Bio-Activity

Measured by its binding ability in a functional ELISA. Immobilized Recombinant Human Leptin protein at 2 μg/mL (100 μL/well) can bind Recombinant Human Leptin R/CD295 protein. The EC<sub>50</sub> of Leptin R/CD295 is 261.45 ng/mL.

#### Storage

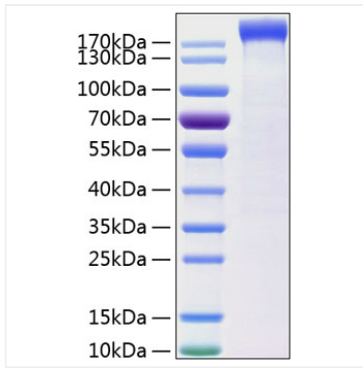
Store at -20°C. Store the lyophilized protein at -20°C to -80 °C up to 1 year from the date of receipt.

After reconstitution, the protein solution is stable at -20°C for 3 months, at 2-8°C for up to 1 week.

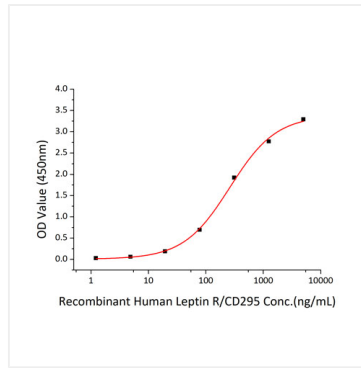
Avoid repeated freeze/thaw cycles.

## Validation Data

---



Recombinant Human Leptin receptor/LEP-R/CD295 Protein was determined by SDS-PAGE with Coomassie Blue, showing a band at 170-190 kDa.



Immobilized Recombinant Human Leptin protein at 2 $\mu$ g/mL (100  $\mu$ L/well) can bind Recombinant Human Leptin receptor/LEP-R/CD295 Protein. The EC<sub>50</sub> of Leptin R/CD295 is 261.45 ng/mL.