

# Recombinant Human IL-15 Protein

Catalog No.: RP01257 **Recombinant**

## Sequence Information

Species	Gene ID	Swiss Prot
Human	3600	P40933-1

### Tags

C-hFc&His

### Synonyms

IL15;IL-15

## Product Information

Source	Purification
HEK293 cells	>95% by SDS-PAGE.

Calculated MW	Observed MW
39.56 kDa	55-60 kDa

### Endotoxin

< 0.1 EU/μg of the protein by LAL method.

### Formulation

Lyophilized from a 0.22 μm filtered solution of PBS, pH7.4. Contact us for customized product form or formulation.

### Reconstitution

Centrifuge the vial before opening. Reconstitute to a concentration of 0.1-0.5 mg/mL in sterile distilled water. Avoid vortex or vigorously pipetting the protein. For long term storage, it is recommended to add a carrier protein or stabilizer (e.g. 0.1% BSA, 5% HSA, 10% FBS or 5% Trehalose), and aliquot the reconstituted protein solution to minimize free-thaw cycles.

## Contact

 | 400-999-6126

 | [cn.market@abclonal.com.cn](mailto:cn.market@abclonal.com.cn)

 | [www.abclonal.com.cn](http://www.abclonal.com.cn)

## Background

### Basic Information

#### Description

Recombinant Human IL-15 Protein is produced by HEK293 cells expression system. The target protein is expressed with sequence (Asn49-Ser162) of human IL-15 (Accession #NP\_000576.1) fused with a Fc, 6×His tag at the C-terminus.

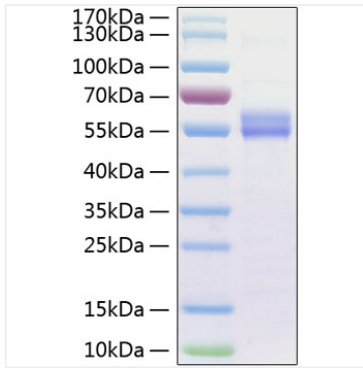
#### Bio-Activity

1.Measured in a cell proliferation assay using HT-2 cells. The ED<sub>50</sub> for this effect is 2-8 ng/mL, corresponding to a specific activity of 1.25 × 10<sup>5</sup>~5.0 × 10<sup>5</sup> units/mg.|2.Measured in a cell proliferation assay using MO7e human megakaryocytic leukemic cells. The ED<sub>50</sub> for this effect is 24.29-97.14 ng/mL, corresponding to a specific activity of 1.03 × 10<sup>4</sup>~4.12 × 10<sup>4</sup> units/mg.

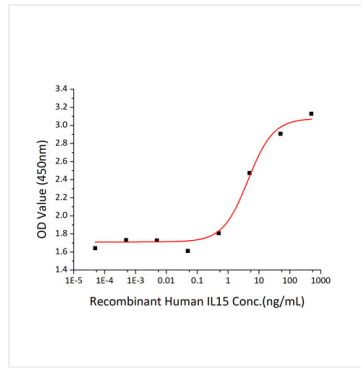
#### Storage

Store at -20°C.Store the lyophilized protein at -20°C to -80 °C up to 1 year from the date of receipt. After reconstitution, the protein solution is stable at -20°C for 3 months, at 2-8°C for up to 1 week. Avoid repeated freeze/thaw cycles.

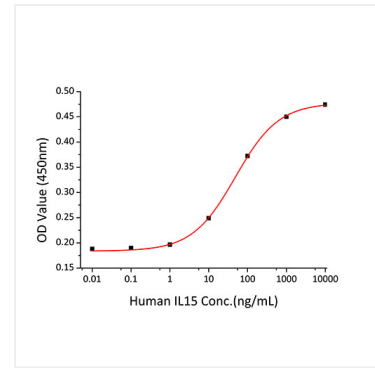
## Validation Data



Active Recombinant Human IL-15 Protein was determined by SDS-PAGE with Coomassie Blue, showing a band at 55-60 kDa.



Recombinant Human IL-15 promotes the proliferation of HT-2 cells. The ED<sub>50</sub> for this effect is 2-8 ng/mL, corresponding to a specific activity of  $1.25 \times 10^5 \sim 5.0 \times 10^5$  units/mg.



Recombinant human IL15 promotes the proliferation of MO7e human megakaryocytic leukemic cells. The ED<sub>50</sub> for this effect is 24.29-97.14ng/mL, corresponding to a specific activity of  $1.03 \times 10^4 \sim 4.12 \times 10^4$  units/mg.