

Recombinant SARS-COV-2 Spike S1+S2 ECD(S-ECD) Protein

Catalog No.: RP01260LQ **Recombinant** **4 Publications**

Sequence Information

Species	Gene ID	Swiss Prot
SARS-COV-2	43740568	

Tags

C-His

Synonyms

Envelope;SARS-CoV-2 Spike RBD (N501Y);Spike;Spike ECD;Spike RBD;Spike S1;Spike S2;Spike S2 ECD;S1-RBD protein;NCP-CoV RBD Protein;novel coronavirus RBD Protein;2019-nCoV RBD Protein;S glycoprotein Subunit1 RBD Protein

Product Information

Source	Purification
HEK293 cells	>97% by SDS-PAGE.

Calculated MW	Observed MW
14.11 kDa	80 kDa, 110 kDa, 180 kDa

Endotoxin

< 0.1 EU/μg of the protein by LAL method.

Formulation

Supplied as a 0.22 μm filtered solution in PBS, pH 7.4. Contact us for customized product form or formulation.

Reconstitution

Background

The spike protein (S) of coronavirus (CoV) attaches the virus to its cellular receptor, angiotensin-converting enzyme 2 (ACE2). A defined receptor-binding domain (RBD) on S mediates this interaction. The S protein plays key parts in the induction of neutralizing-antibody and T-cell responses, as well as protective immunity.

Basic Information

Description

Recombinant SARS-COV-2 Spike S1+S2 ECD(S-ECD) Protein is produced by HEK293 cells expression system. The target protein is expressed with sequence (Val11-Gln1208) of SARS-COV-2(2019-nCoV) S1+S2 ECD (S-ECD) (Accession #YP_009724390.1) fused with a 6×His tag at the C-terminus.

Bio-Activity

Measured by its binding ability in a functional ELISA. Immobilized Recombinant SARS-CoV-2 Spike S1+S2 ECD-His at 2 μg/mL (100 μL/well) can bind Recombinant Human ACE2 with a linear range of 0.15-9.92 ng/mL.

Storage

Store at -70°C. This product is stable at ≤ -70°C for up to 1 year from the date of receipt. For optimal storage, aliquot into smaller quantities after centrifugation and store at recommended temperature. Avoid repeated freeze-thaw cycles. Avoid repeated freeze/thaw cycles.

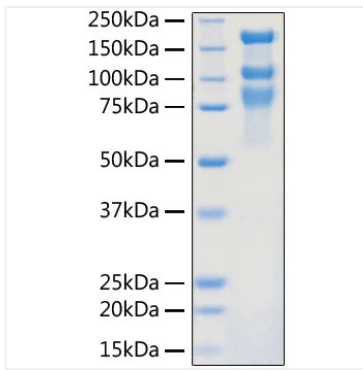
Contact

☎ | 400-999-6126

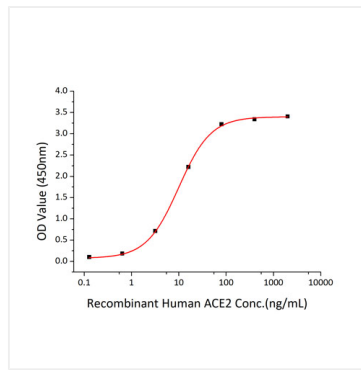
✉ | cn.market@abclonal.com.cn

🌐 | www.abclonal.com.cn

Validation Data



Recombinant SARS-COV-2 S1+S2 ECD (S-ECD) Protein with His tag was determined by SDS-PAGE with Coomassie Blue, showing bands around 80,110,180 kDa.



Immobilized Recombinant SARS-COV-2 Spike S1+S2 ECD-His at 2 μ g/mL (100 μ L/well) can bind Recombinant Human ACE2 with a linear range of 0.15-9.92 ng/mL.