

Catalog No.: RP01268LQ **Recombinant**

Species	Gene ID	Swiss Prot
Human	2267	O08830-1

C-His

FGL1:HFREP1:HP-041:LFIRE-1:LFIRE1

Source	Purification
HEK293 cells	≥ 90 % as determined by SDS-PAGE

37.22 kDa 36-38 kDa

Please contact us for more information.

Supplied as a 0.22 µm filtered solution in 20mM Tris,300mM NaCl,10% Glycerol,pH 8.0Contact us for customized product form or formulation.

Reconstitution

 | 400-999-6126

 | cn.market@abclonal.com.cn

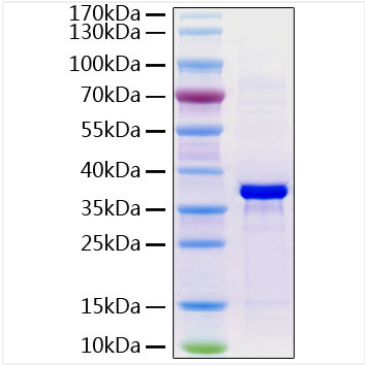
 | www.abclonal.com.cn

Recombinant Human Fibrinogen like 1/FGL1 Protein is produced by HEK293 cells expression system. The target protein is expressed with sequence (Met1-Ile312) of Human Fibrinogen like 1/FGL1 (Accession #NP_004458.3) fused with a 6xHis tag at the C-terminus.

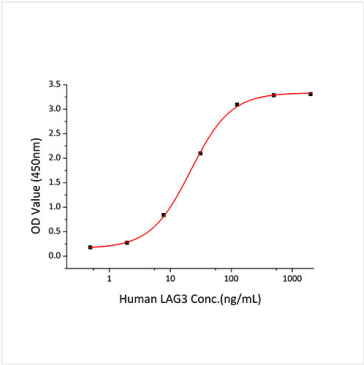
1. Measured by its binding ability in a functional ELISA. Immobilized recombinant Human FGL1 at 5 µg/mL (100 µL/well) can bind recombinant Human LAG3 with a linear range of 0.5-21.6 ng/mL. 2. Measured by its binding ability in a functional ELISA. Immobilized Human FGL1 at 1 µg/mL (100 µL/well) can bind FGL1 Rabbit mAb with a linear range of 1-27.5 ng/mL.

Store at -70°C. This product is stable at $\leq -70^{\circ}\text{C}$ for up to 1 year from the date of receipt. For optimal storage, aliquot into smaller quantities after centrifugation and store at recommended temperature. Avoid repeated freeze-thaw cycles.

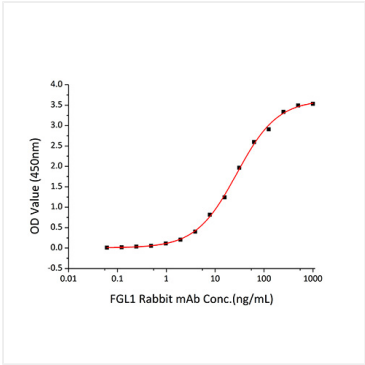
Validation Data



Recombinant Human Fibrinogen like 1/FGL1 Protein was determined by SDS-PAGE under reducing conditions with Coomassie Blue.



Immobilized recombinant Human FGL1 at 5µg/mL (100µL/well) can bind recombinant Human LAG3 with a linear range of 0.5-21.6ng/mL.



Immobilized Recombinant Human FGL1 at 1 µg/mL (100 µL/well) can bind FGL1 Rabbit mAb with a linear range of 1-27.5 ng/mL.