

# Recombinant SARS-CoV-2 papain-like protease Protein

Catalog No.: RP01274LQ **Recombinant**

## Sequence Information

Species	Gene ID	Swiss Prot
SARS-CoV-2	43740578	

### Tags

N-His

### Synonyms

PLPro;PL-PRO;pp1a;Papain-like Protease;Replicase polyprotein 1a;ORF1a polyprotein;Plpro;COVID-19

## Product Information

Source	Purification
<i>E. coli</i>	> 90% by SDS-PAGE.

### Endotoxin

< 1.0 EU/μg of the protein by LAL method.

### Formulation

Supplied as a 0.22 μm filtered solution in 20mM Tris, 20% Glycerol, 10mM β-Me pH 7.5. Contact us for customized product form or formulation.

### Reconstitution

## Background

### Basic Information

#### Description

Recombinant SARS-CoV-2(2019-nCoV) papain-like protease is produced by *E. coli* expression system. The target protein is expressed with sequence (Glu1564-Lys1878) of SARS-COV-2(2019-nCoV) papain-like protease (Accession #YP\_009725299.1) fused with an initial Met, a 6×His tag at the N-terminus.

#### Bio-Activity

#### Storage

Store at -70°C. This product is stable at ≤ -70°C for up to 1 year from the date of receipt. For optimal storage, aliquot into smaller quantities after centrifugation and store at recommended temperature. Avoid repeated freeze-thaw cycles. Avoid repeated freeze/thaw cycles.

## Contact

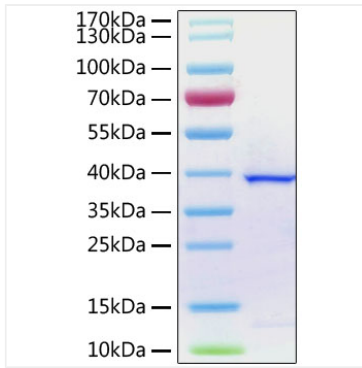
☎ | 400-999-6126

✉ | [cn.market@abclonal.com.cn](mailto:cn.market@abclonal.com.cn)

🌐 | [www.abclonal.com.cn](http://www.abclonal.com.cn)

## Validation Data

---



Recombinant SARS-CoV-2 papain-like protease Protein was determined by SDS-PAGE with Coomassie Blue, showing a band at 38 kDa.