

Recombinant Human ACE2 Protein with His tag

Catalog No.: RP01276 **Recombinant**

Sequence Information

Species	Gene ID	Swiss Prot
Human	59272	Q9BYF1

Tags

C-6×His

Synonyms

ACE2; ACEH; angiotensin-converting enzyme 2;ACEH

Product Information

Source	Purification
HEK293 cells	> 90% by SDS-PAGE.

Endotoxin

< 0.1 EU/μg of the protein by LAL method.

Formulation

Lyophilized from a 0.22 μm filtered solution of PBS, pH 7.4. or Supplied as a 0.22 μm filtered solution in PBS, pH 7.4. Contact us for customized product form or formulation.

Reconstitution

Centrifuge the vial before opening. Reconstitute to a concentration of 0.1-0.5 mg/mL in sterile distilled water. Avoid vortex or vigorously pipetting the protein. For long term storage, it is recommended to add a carrier protein or stabilizer (e.g. 0.1% BSA, 5% HSA, 10% FBS or 5% Trehalose), and aliquot the reconstituted protein solution to minimize free-thaw cycles.

Contact

 | 400-999-6126

 | cn.market@abclonal.com.cn

 | www.abclonal.com.cn

Background

Basic Information

Description

Recombinant Human ACE2 Protein is produced by HEK293 cells expression system. The target protein is expressed with sequence (Gln18-Ser740) of human ACE2 (Accession #Q9BYF1) fused with a 6×His tag at the C-terminus.

Bio-Activity

Measured by its binding ability in a functional ELISA. Immobilized Recombinant Human ACE2 at 2μg/mL (100 μL/well) can bind Recombinant SARS-COV-2 Spike S1 with a linear range of 0.49-27.83 ng/mL.

Storage

Store the lyophilized protein at -20°C to -80°C for long term.

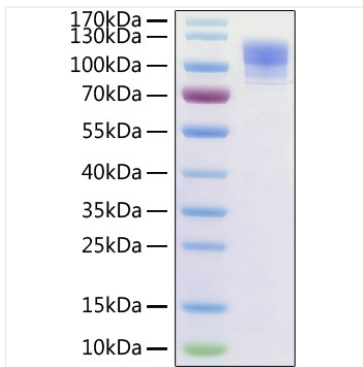
After reconstitution, the protein solution is stable at -20°C for 3 months, at 2-8°C for up to 1 week.

or This product is stable at ≤ -70°C for up to 1 year from the date of receipt.

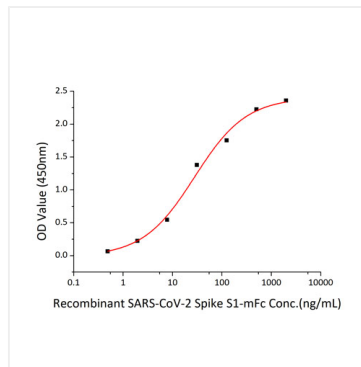
For optimal storage, aliquot into smaller quantities after centrifugation and store at recommended temperature.

Avoid repeated freeze/thaw cycles.

Validation Data



Recombinant Human ACE2 Protein with His tag was determined by SDS-PAGE with Coomassie Blue, showing a band at 110-120 kDa.



Immobilized Recombinant Human ACE2 at 2 μ g/mL (100 μ L/well) can bind Recombinant SARS-COV-2 Spike S1 with a linear range of 0.49-27.83 ng/mL.