

Recombinant SARS-CoV-2 Spike S1+S2 ECD(S-ECD) Protein

Catalog No.: RP01283LQ **Recombinant** **4 Publications**

Sequence Information

Species	Gene ID	Swiss Prot
SARS-CoV-2	43740568	P0DTC2

Tags

C-His

Synonyms

Envelope;SARS-CoV-2 Spike RBD (N501Y);Spike;Spike ECD;Spike RBD;Spike S1;Spike S2;Spike S2 ECD;S1-RBD protein;NCP-CoV RBD Protein;novel coronavirus RBD Protein;2019-nCoV RBD Protein;S glycoprotein Subunit1 RBD Protein

Product Information

Source	Purification
HEK293 cells	> 95% by SDS-PAGE.

Endotoxin

< 0.1 EU/μg of the protein by LAL method.

Formulation

Supplied as a 0.22 μm filtered solution in PBS, pH 7.4. Contact us for customized product form or formulation.

Reconstitution

Background

Basic Information

Description

Recombinant SARS-CoV-2 S1+S2 ECD(S-ECD) Protein is produced by HEK293 cells expression system. The target protein is expressed with sequence (Val11-Gln1208) of SARS-CoV-2 S1+S2 ECD(S-ECD) (Accession #YP_009724390.1) fused with a 6×His tag at the C-terminus. It is the wildtype sequence in pre-fusion state without any mutation.

Bio-Activity

Measured by its binding ability in a functional ELISA. Immobilized SARS-CoV-2 S1+S2 ECD(S-ECD) at 2 μg/mL (100 μL/well) can bind recombinant Human ACE2 with a linear range of 0.15-3.72 ng/mL.

Storage

The product is shipped with ice or equivalent. Upon receipt, store it immediately at the temperature recommended below.

This product is stable at ≤ -70°C for up to 1 year from the date of receipt.

For optimal storage, aliquot into smaller quantities after centrifugation and store at recommended temperature.

Avoid repeated freeze/thaw cycles.

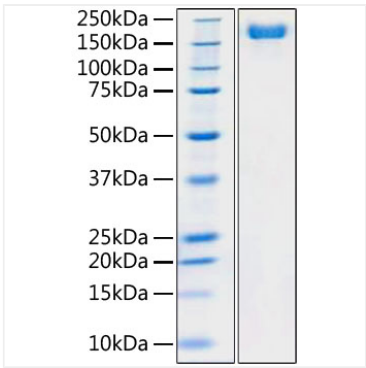
Contact

 | 400-999-6126

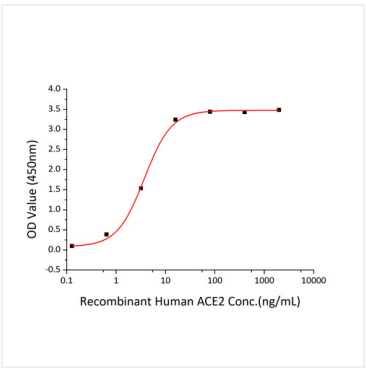
 | cn.market@abclonal.com.cn

 | www.abclonal.com.cn

Validation Data



Recombinant SARS-COV-2 S1+S2 ECD(S-ECD) Protein with His tag was determined by SDS-PAGE with Coomassie Blue, showing a band at 180 kDa.



Immobilized SARS-CoV-2 S1+S2 ECD(S-ECD) at 2µg/mL (100 µL/well) can bind recombinant Human ACE2 with a linear range of 0.15-3.72 ng/mL.