

Recombinant Mouse Siglec-15/CD33L3 Protein

Catalog No.: RP01290 **Recombinant**

Sequence Information

Species	Gene ID	Swiss Prot
Mouse	620235	A7E1W8

Tags

C-hFc

Synonyms

sialic acid-binding Ig-like lectin 15;CD33 antigen-like 3;SIGLEC15;Siglec15;SIGLEC15;sialic acid-binding Ig-like lectin 15;CD33 antigen-like 3;SIGLEC15;Siglec15;SIGLEC15

Product Information

Source	Purification
HEK293 cells	> 90% by SDS-PAGE.

Endotoxin

< 0.1 EU/μg of the protein by LAL method.

Formulation

Lyophilized from a 0.22 μm filtered solution of PBS, pH 7.4.

Reconstitution

Centrifuge the vial before opening. Reconstitute to a concentration of 0.1-0.5 mg/mL in sterile distilled water. Avoid vortex or vigorously pipetting the protein. For long term storage, it is recommended to add a carrier protein or stabilizer (e.g. 0.1% BSA, 5% HSA, 10% FBS or 5% Trehalose), and aliquot the reconstituted protein solution to minimize free-thaw cycles.

Contact

☎ | 400-999-6126

✉ | cn.market@abclonal.com.cn

🌐 | www.abclonal.com.cn

Background

Basic Information

Description

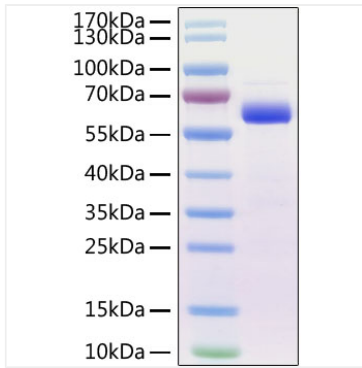
Recombinant Mouse Siglec-15/CD33L3 Protein is produced by HEK293 cells expression system. The target protein is expressed with sequence (Arg24-Thr262) of mouse Siglec-15/CD33L3 (Accession #NP_001094508.1) fused with a Fc tag at the C-terminus.

Bio-Activity

Storage

Store at -20°C. Store the lyophilized protein at -20°C to -80 °C up to 1 year from the date of receipt. After reconstitution, the protein solution is stable at -20°C for 3 months, at 2-8°C for up to 1 week. Avoid repeated freeze/thaw cycles.

Validation Data



Recombinant Mouse Siglec-15/CD33L3
Protein was determined by SDS-PAGE with
Coomassie Blue, showing a band at 60-70
kDa.