

# Recombinant Cynomolgus Siglec-15/CD33L3 Protein

Catalog No.: RP01292 **Recombinant**

## Sequence Information

Species	Gene ID	Swiss Prot
Cynomolgus	102126346	A0A2K5UY47

### Tags

C-hFc&His

### Synonyms

sialic acid-binding Ig-like lectin 15;CD33 antigen-like 3;SIGLEC15;Siglec15;SIGLEC15;sialic acid-binding Ig-like lectin 15;CD33 antigen-like 3;SIGLEC15;Siglec15;SIGLEC15

## Product Information

Source	Purification
HEK293 cells	> 90% by SDS-PAGE.

Calculated MW	Observed MW
53.04 kDa	60-70 kDa

### Endotoxin

< 1.0 EU/μg of the protein by LAL method.

### Formulation

Lyophilized from a 0.22 μm filtered solution of PBS,300mM NaCl, pH 7.4.

### Reconstitution

Centrifuge the vial before opening. Reconstitute to a concentration of 0.1-0.5 mg/mL in sterile distilled water. Avoid vortex or vigorously pipetting the protein. For long term storage, it is recommended to add a carrier protein or stabilizer (e.g. 0.1% BSA, 5% HSA, 10% FBS or 5% Trehalose), and aliquot the reconstituted protein solution to minimize free-thaw cycles.

## Contact

 | 400-999-6126

 | [cn.market@abclonal.com.cn](mailto:cn.market@abclonal.com.cn)

 | [www.abclonal.com.cn](http://www.abclonal.com.cn)

## Background

### Basic Information

#### Description

Recombinant Cynomolgus Siglec-15/CD33L3 Protein is produced by HEK293 cells expression system. The target protein is expressed with sequence (Phe20-Thr263) of cynomolgus Siglec-15/CD33L3 (Accession #XP\_005586866.1) fused with a Fc, 6×His tag at the C-terminus.

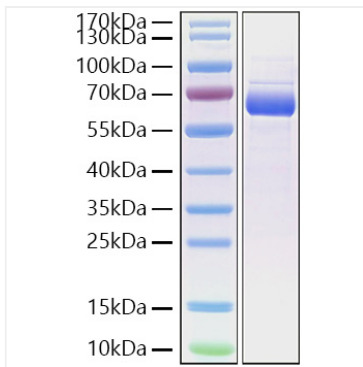
#### Bio-Activity

#### Storage

Store at -20°C. Store the lyophilized protein at -20°C to -80 °C up to 1 year from the date of receipt. After reconstitution, the protein solution is stable at -20°C for 3 months, at 2-8°C for up to 1 week. Avoid repeated freeze/thaw cycles.

## Validation Data

---



Recombinant Cynomolgus Siglec-15/CD33L3 Protein was determined by SDS-PAGE with Coomassie Blue, showing a band at 60-65 kDa.