

Recombinant SARS-CoV-2 Spike S1+S2 ECD(S-ECD)(D614G) Protein

Catalog No.: RP01293LQ **Recombinant**

Sequence Information

Species	Gene ID	Swiss Prot
SARS-CoV-2	43740568	PODTC2

Tags

C-His

Synonyms

Envelope;SARS-CoV-2 Spike RBD (N501Y);Spike;Spike ECD;Spike RBD;Spike S1;Spike S2;Spike S2 ECD;S1-RBD protein;NCP-CoV RBD Protein;novel coronavirus RBD Protein;2019-nCoV RBD Protein;S glycoprotein Subunit1 RBD Protein

Product Information

Source	Purification
HEK293 cells	> 95% by SDS-PAGE.

Calculated MW	Observed MW
133.52 kDa	80, 110, 250 kDa

Endotoxin

< 1.0 EU/μg of the protein by LAL method.

Formulation

Supplied as a 0.22 μm filtered solution in PBS, pH 7.4.

Reconstitution

Background

Basic Information

Description

Recombinant SARS-CoV-2 Spike S1+S2 ECD(S-ECD)(D614G) Protein is produced by HEK293 cells expression system. The target protein is expressed with sequence (Val11-Gln1208(Asp614Gly)) of sars-cov-2 S1+S2 ECD[S-ECD](D614G) (Accession #YP_009724390.1) fused with a 6×His tag at the C-terminus.

Bio-Activity

Measured by its binding ability in a functional ELISA. Immobilized Recombinant SARS-CoV-2 Spike S1+S2 ECD at 2 μg/mL (100μL/well) can bind Recombinant Human ACE2 with a linear range of 0.15-4.55 ng/mL.

Storage

Store at -70°C. This product is stable at ≤ -70°C for up to 1 year from the date of receipt. For optimal storage, aliquot into smaller quantities after centrifugation and store at recommended temperature. Avoid repeated freeze-thaw cycles. Avoid repeated freeze/thaw cycles.

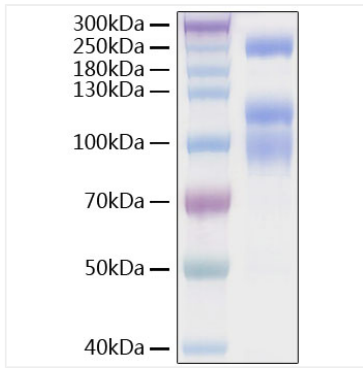
Contact

 | 400-999-6126

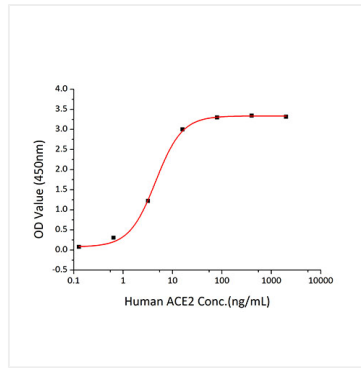
 | cn.market@abclonal.com.cn

 | www.abclonal.com.cn

Validation Data



Recombinant SARS-CoV-2 Spike S1+S2 ECD(S-ECD)(D614G) Protein was determined by SDS-PAGE with Coomassie Blue, showing bands at 80,110,180 kDa.



Immobilized Recombinant SARS-CoV-2 Spike S1+S2 ECD at 2 μ g/mL (100 μ L/well) can bind Recombinant Human ACE2 with a linear range of 0.15-4.55ng/mL.