

Recombinant Cynomolgus Siglec-15/CD33L3 Protein

Catalog No.: RP01294 **Recombinant**

Sequence Information

Species	Gene ID	Swiss Prot
Cynomolgus	102126346	A0A2K5UY47

Tags

C-His

Synonyms

sialic acid-binding Ig-like lectin 15;CD33 antigen-like 3;SIGLEC15;Siglec15;SIGLEC15;sialic acid-binding Ig-like lectin 15;CD33 antigen-like 3;SIGLEC15;Siglec15;SIGLEC15

Product Information

Source	Purification
HEK293 cells	> 95% by SDS-PAGE.

Calculated MW	Observed MW
27.09 kDa	35-40 kDa

Endotoxin

Please contact us for more information.


Formulation

Lyophilized from a 0.22 µm filtered solution of PBS,0.1M Glycine, pH 9.0.

Reconstitution

Centrifuge the vial before opening. Reconstitute to a concentration of 0.1-0.5 mg/mL in sterile distilled water. Avoid vortex or vigorously pipetting the protein. For long term storage, it is recommended to add a carrier protein or stabilizer (e.g. 0.1% BSA, 5% HSA, 10% FBS or 5% Trehalose), and aliquot the reconstituted protein solution to minimize free-thaw cycles.

Contact

 | 400-999-6126

 | cn.market@abclonal.com.cn

 | www.abclonal.com.cn

Background

Basic Information

Description

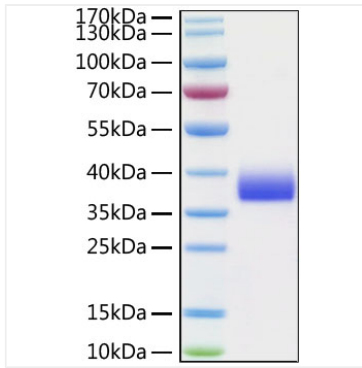
Recombinant Cynomolgus Siglec-15/CD33L3 Protein is produced by HEK293 cells expression system. The target protein is expressed with sequence (Phe20-Thr263) of cynomolgus Siglec-15/CD33L3 (Accession #XP_005586866.1) fused with a 6×His tag at the C-terminus.

Bio-Activity

Storage

Store at -20°C. Store the lyophilized protein at -20°C to -80 °C up to 1 year from the date of receipt. After reconstitution, the protein solution is stable at -20°C for 3 months, at 2-8°C for up to 1 week. Avoid repeated freeze/thaw cycles.

Validation Data



Recombinant Cynomolgus Siglec-15/CD33L3 Protein was determined by SDS-PAGE with Coomassie Blue, showing bands at 38 kDa.