

Recombinant SARS-CoV Spike RBD Protein

Catalog No.: RP01299

Recombinant

2 Publications

Sequence Information

Species	Gene ID	Swiss Prot
SARS-CoV	1489668	P59594

Tags

C-His

Synonyms

Spike;Spike RBD;Spike S1

Product Information

Source	Purification
HEK293 cells	≥ 95 % as determined by SDS-PAGE.

Calculated MW	Observed MW
25.85 kDa	36-40

Endotoxin

< 0.1 EU/μg of the protein by LAL method.

Formulation

Lyophilized from a 0.22 μm filtered solution of PBS,300mM NaCl, pH 7.4.or Supplied as a 0.22 μm filtered solution in PBS,300mM NaCl, pH 7.4.

Reconstitution

Centrifuge the vial before opening. Reconstitute to a concentration of 0.1-0.5 mg/mL in sterile distilled water. Avoid vortex or vigorously pipetting the protein. For long term storage, it is recommended to add a carrier protein or stabilizer (e.g. 0.1% BSA, 5% HSA, 10% FBS or 5% Trehalose), and aliquot the reconstituted protein solution to minimize free-thaw cycles.

Background

Basic Information

Description

Recombinant SARS-CoV Spike RBD Protein is produced by HEK293 cells expression system. The target protein is expressed with sequence (Arg306-Phe527) of sars-cov Spike RBD (Accession #NP_828851.1) fused with a 6×His tag at the C-terminus.

Bio-Activity

Measured by its binding ability in a functional ELISA. Immobilized SARS-CoV Spike RBD at 2μg/mL (100μL/well) can bind Human ACE2 (Catalog: RP01275) with a linear range of 0.1-5.18 ng/mL.

Storage

Store at -20°C.Store the lyophilized protein at -20°C to -80 °C up to 1 year from the date of receipt.

After reconstitution, the protein solution is stable at -20°C for 3 months, at 2-8°C for up to 1 week.

Avoid repeated freeze/thaw cycles.

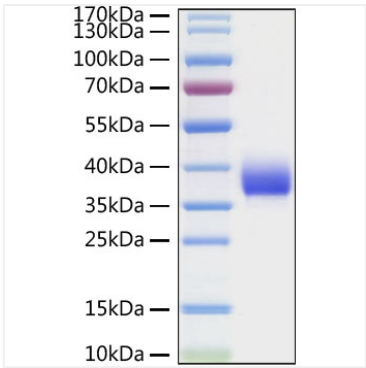
Contact

☎ | 400-999-6126

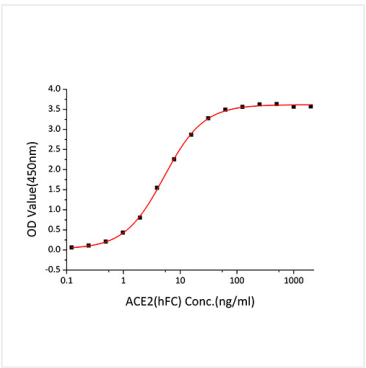
✉ | cn.market@abclonal.com.cn



Validation Data



Recombinant SARS-CoV Spike RBD Protein was determined by SDS-PAGE under reducing conditions with Coomassie Blue.



Immobilized SARS-CoV Spike RBD at 2μg/mL (100μL/well) can bind Human ACE2 (Catalog: RP01275) with a linear range of 0.1-5.18 ng/mL.