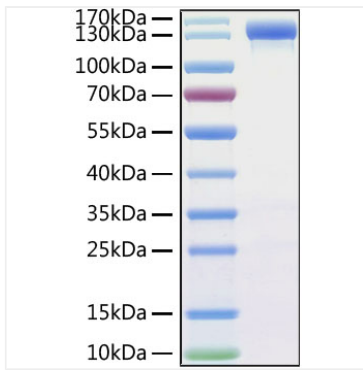
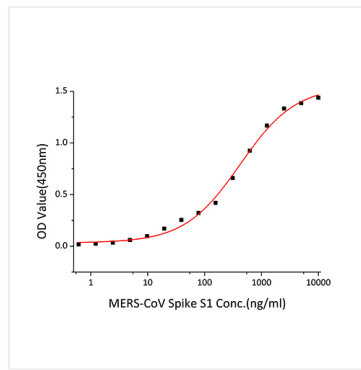


Validation Data



Recombinant MERS-CoV Spike S1 Protein was determined by SDS-PAGE under reducing conditions with Coomassie Blue.



Immobilized Human CD26 (Catalog: RP01300LQ) at 2 μ g/mL (100 μ L/well) can bind MERS-CoV Spike S1 with a linear range of 0.5-420.21ng/mL.