

Catalog No.: RP01309 **Recombinant**

Species	Gene ID	Swiss Prot
SARS-CoV	1489668	O5DIC5

C-His

Spike:Spike RBD:Spike S1

Source	Purification
HEK293 cells	≥ 90 % as determined by SDS-PAGE

73.84 kDa 110-130 kDa


< 1 EU/μg of the protein by LAL method.

Lyophilized from a 0.22 μm filtered solution of PBS, pH 7.4.

Centrifuge the vial before opening. Reconstitute to a concentration of 0.1-0.5 mg/mL in sterile distilled water. Avoid vortex or vigorously pipetting the protein. For long term storage, it is recommended to add a carrier protein or stabilizer (e.g. 0.1% BSA, 5% HSA, 10% FBS or 5% Trehalose), and aliquot the reconstituted protein solution to minimize free-thaw cycles.

 | 400-999-6126

 | cn.market@abclonal.com.cn

 | www.abclonal.com.cn

The spike (S) glycoprotein of coronaviruses contains protrusions that will only bind to certain receptors on the host cell. Known receptors bind S1 are ACE2, angiotensin-converting enzyme 2; DPP4, dipeptidyl peptidase-4; APN, aminopeptidase N; CEACAM, carcinoembryonic antigen-related cell adhesion molecule 1; Sia, sialic acid; O-ac Sia, O-acetylated sialic acid. The spike is essential for both host specificity and viral infectivity. The term 'peplomer' is typically used to refer to a grouping of heterologous proteins on the virus surface that function together. The spike (S) glycoprotein of coronaviruses is known to be essential in the binding of the virus to the host cell at the advent of the infection process. It's been reported that SARS-CoV-2 (COVID-19 coronavirus, 2019-nCoV) can infect the human respiratory epithelial cells through interaction with the human ACE2 receptor. The spike protein is a large type I transmembrane protein containing two subunits, S1 and S2. S1 mainly contains a receptor binding domain (RBD), which is responsible for recognizing the cell surface receptor. S2 contains basic elements needed for the membrane fusion. The S protein plays key parts in the induction of neutralizing-antibody and T-cell responses, as well as protective immunity. The main functions for the Spike protein are summarized as: Mediate receptor binding and membrane fusion; Defines the range of the hosts and specificity of the virus; Main component to bind with the neutralizing antibody; Key target for vaccine design; Can be transmitted between different hosts through gene recombination or mutation of the receptor binding domain (RBD), leading to a higher mortality rate.

Recombinant SARS-CoV Spike S1 Protein is produced by HEK293 cells expression system. The target protein is expressed with sequence (Ser14-Arg667) of sars-cov Spike S1 (Accession #AAX16192.1) fused with an 6xHis tag at the C-terminus.

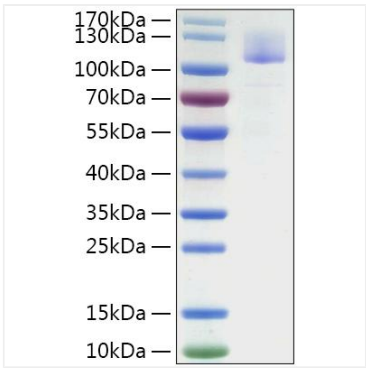
Measured by its binding ability in a functional ELISA. Immobilized SARS-CoV Spike S1 at 2µg/mL (100µL/well) can bind Human ACE2 (Catalog: RP01275) with a linear range of 0.05-11.55 ng/mL.

The product is shipped at ambient temperature. Upon receipt, store it immediately at the temperature recommended below.

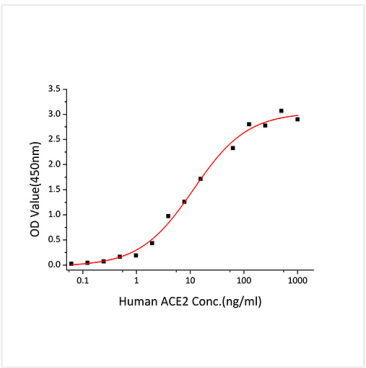
Store at -20°C. Store the lyophilized protein at -20°C to -80 °C up to 1 year from the date of receipt.
After reconstitution, the protein solution is stable at -20°C for 3 months, at 2-8°C for up to 1 week.
Avoid repeated freeze/thaw cycles.

For your safety and health, please wear a lab coat and disposable gloves for handling.

Validation Data



Recombinant SARS-CoV Spike S1 Protein was determined by SDS-PAGE under reducing conditions with Coomassie Blue.



Immobilized SARS-CoV Spike S1 at 2μg/mL (100μL/well) can bind Human ACE2 (Catalog: RP01275) with a linear range of 0.05-11.55 ng/mL.