

Recombinant Human LILRA3/CD85e Protein

Catalog No.: RP01333 **Recombinant**

Sequence Information

| Species | Gene ID | Swiss Prot |
|---------|---------|------------|
| Human | 11026 | Q8N6C8 |

Tags

C-His

Synonyms

LILRA3;ILT6;LIR4;CD85e;LILRA3

Product Information

| Source | Purification |
|--------------|--------------------|
| HEK293 cells | > 95% by SDS-PAGE. |

Endotoxin

<1EU/μg

Formulation

Lyophilized from a 0.22 μm filtered solution of PBS, pH 7.4.

Reconstitution

Centrifuge the vial before opening. Reconstitute to a concentration of 0.1-0.5 mg/mL in sterile distilled water. Avoid vortex or vigorously pipetting the protein. For long term storage, it is recommended to add a carrier protein or stabilizer (e.g. 0.1% BSA, 5% HSA, 10% FBS or 5% Trehalose), and aliquot the reconstituted protein solution to minimize free-thaw cycles.

Contact

 | 400-999-6126 | cn.market@abclonal.com.cn | www.abclonal.com.cn

Background

LILRA3, also known as ILT6, belongs to the ILT family. In humans, the ILT gene family includes up to 11 members. The extracellular portion of all members includes at least two and usually four immunoglobulin domains. ILT-2 through 5 are all inhibitory members having variable numbers of cytoplasmic ITIM domains. ILT6 lacks a transmembrane domain. The function of ILT6 is currently unknown. However, it is highly homologous to other LILR genes, and can bind human leukocyte antigen (HLA) class I. Therefore, if secreted, the ILT6 might impair interactions of membrane-bound LILRs (such as LILRB1, an inhibitory receptor expressed on effector and memory CD8 T cells) with their HLA ligands, thus modulating immune reactions and influencing susceptibility to disease.

Basic Information

Description

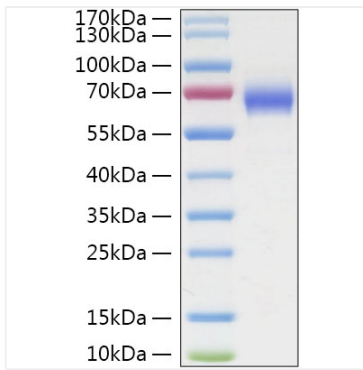
Recombinant Human LILRA3/CD85e Protein is produced by HEK293 cells expression system. The target protein is expressed with sequence (Gly24-Glu439) of Human LILRA3 (Accession #NP_006856.3) fused with a 6×His tag at the C-terminus.

Bio-Activity

Storage

Store at -20°C. Store the lyophilized protein at -20°C to -80 °C up to 1 year from the date of receipt. After reconstitution, the protein solution is stable at -20°C for 3 months, at 2-8°C for up to 1 week. Avoid repeated freeze/thaw cycles.

Validation Data



Recombinant Human LILRA3/CD85e Protein was determined by SDS-PAGE with Coomassie Blue, showing a band at 57-66kDa.