

Catalog No.: RP01359 **Recombinant**

Species	Gene ID	Swiss Prot
Human	947	P28906-1

Tags
C-hFc&His

CD34; CD34 molecule;CD34 molecule;GIG3;MORT1

Source	Purification
HEK293 cells	≥ 95 % as determined by SDS-PAGE

Calculated MW	Observed MW
54.27 kDa	100-120 kDa

< 0.1 EU/μg of the protein by LAL method.

Lyophilized from a 0.22 μm filtered solution of PBS, pH 7.4.

Centrifuge the vial before opening. Reconstitute to a concentration of 0.1-0.5 mg/mL in sterile distilled water. Avoid vortex or vigorously pipetting the protein. For long term storage, it is recommended to add a carrier protein or stabilizer (e.g. 0.1% BSA, 5% HSA, 10% FBS or 5% Trehalose), and aliquot the reconstituted protein solution to minimize free-thaw cycles.

 | 400-999-6126

 | cn.market@abclonal.com.cn

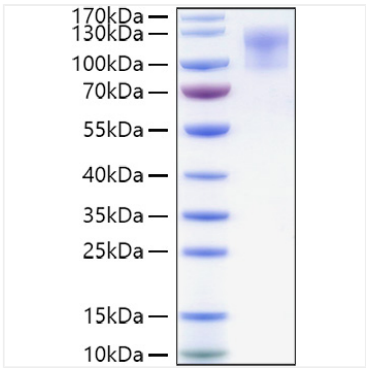
 | www.abclonal.com.cn

The CD34 protein is a member of a family of single-pass transmembrane sialomucin proteins that show expression on early hematopoietic and vascular-associated tissue. CD34 is also an important adhesion molecule and is required for T cells to enter lymph nodes. It is expressed on lymph node endothelia whereas the L-selectin to which it binds is on the T cell. It was indicated that CD34 is a phosphorylation target for activated PKC, and couples to the hematopoietic adapter protein CrkL, which were involved in CD34 signaling pathways. CD34 is aberrantly expressed in many kinds of tumors and is implicated in leukemogenesis.

Recombinant Human CD34 Protein is produced by HEK293 cells expression system. The target protein is expressed with sequence (Ser32-Thr290) of human CD34 (Accession #NP_001020280.1) fused with a Fc, 6xHis tag at the C-terminus.

Store at -20°C. Store the lyophilized protein at -20°C to -80 °C up to 1 year from the date of receipt.
After reconstitution, the protein solution is stable at -20°C for 3 months, at 2-8°C for up to 1 week.
Avoid repeated freeze/thaw cycles.

Validation Data



Recombinant Human CD34 Protein was determined by SDS-PAGE under reducing conditions with Coomassie Blue.