

**Catalog No.: RP01373** **Recombinant**

Species	Gene ID	Swiss Prot
Mouse	16169	O60819-1

## C-hFc&amp;His

IL-15RA:CD215:AA690181:IL15RA

<b>Source</b>	<b>Purification</b>
HEK293 cells	≥ 95 % as determined by SDS-PAGE

Calculated MW	Observed MW
45.16 kDa	70-90 kDa

< 0.1 EU/μg of the protein by LAL method.

Lyophilized from a 0.22  $\mu\text{m}$  filtered solution of PBS, pH 7.4.

Centrifuge the vial before opening. Reconstitute to a concentration of 0.1-0.5 mg/mL in sterile distilled water. Avoid vortex or vigorously pipetting the protein. For long term storage, it is recommended to add a carrier protein or stabilizer (e.g. 0.1% BSA, 5% HSA, 10% FBS or 5% Trehalose), and aliquot the reconstituted protein solution to minimize free-thaw cycles.

 | 400-999-6126

 | [cn.market@abclonal.com.cn](mailto:cn.market@abclonal.com.cn)

 | [www.abclonal.com.cn](http://www.abclonal.com.cn)

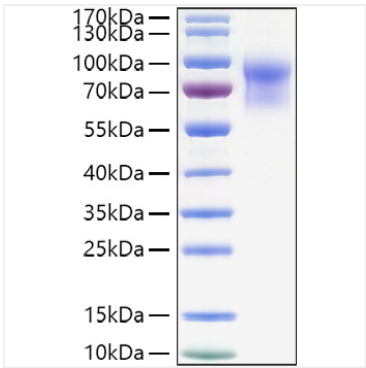
Mouse interleukin-15 receptor subunit alpha, also known as IL15ra, is a high-affinity receptor for interleukin-15. IL15ra associates as a heterotrimer with the IL-2 receptor beta and gamma subunits (Common gamma chain, or gamma c) to initiate signal transduction. It can signal both in cis and trans where IL15R from one subset of cells presents IL15 to neighboring IL2RG-expressing cells. IL15ra is expressed in special cells including a wide variety of T and B cells and non-lymphoid cells. Human IL15ra shares 45% amino acid sequence homology with the mouse form of the receptor. Eight isoforms of IL-15 R alpha mRNA have been identified, resulting from alternative splicing events involving different exons.

Recombinant Mouse IL-15RA/CD215 Protein is produced by HEK293 cells expression system. The target protein is expressed with sequence (Gly33-Lys205) of mouse IL15RA/CD215 (Accession #NP\_032384.1) fused with a Fc, 6×His tag at the C-terminus.

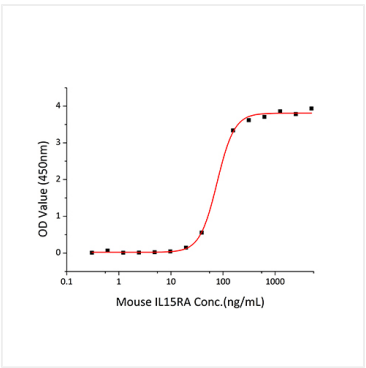
Measured by its binding ability in a functional ELISA. Immobilized Human IL15 at 1  $\mu\text{g/mL}$  (100  $\mu\text{L/well}$ ) can bind Mouse IL15RA with a linear range of 0.3-77  $\text{ng/mL}$ .

Store at -20°C. Store the lyophilized protein at -20°C to -80 °C up to 1 year from the date of receipt.  
After reconstitution, the protein solution is stable at -20°C for 3 months, at 2-8°C for up to 1 week.  
Avoid repeated freeze/thaw cycles.

Validation Data



Recombinant Mouse IL-15RA/CD215 Protein was determined by SDS-PAGE under reducing conditions with Coomassie Blue.



Immobilized Human IL15 at 1 µg/mL (100 µL/well) can bind Mouse IL15RA with a linear range of 0.3-77 ng/mL.