

Catalog No.: RP01405 **Recombinant**

Species	Gene ID	Swiss Prot
Human	3559	P01589

C-hFc&His

IL2RA; CD25; IDDM10; IL2R; IMD41;
TCGFR; p55; interleukin-2 receptor
subunit
alpha;CD25;IDDM10;IL2R;IMD41;TCGFR;
p55

Source	Purification
HEK293 cells	≥ 95 % as determined by SDS-PAGE.

48.53 kDa 65-75 kDa

< 0.1 EU/μg of the protein by LAL method.

Lyophilized from a 0.22 μm filtered solution of PBS, pH 7.4.

Centrifuge the vial before opening. Reconstitute to a concentration of 0.1-0.5 mg/mL in sterile distilled water. Avoid vortex or vigorously pipetting the protein. For long term storage, it is recommended to add a carrier protein or stabilizer (e.g. 0.1% BSA, 5% HSA, 10% FBS or 5% Trehalose), and aliquot the reconstituted protein solution to minimize free-thaw cycles.

The interleukin 2 (IL2) receptor alpha (IL2RA) and beta (IL2RB) chains, together with the common gamma chain (IL2RG), constitute the high-affinity IL2 receptor. Homodimeric alpha chains (IL2RA) result in low-affinity receptor, while homodimeric beta (IL2RB) chains produce a medium-affinity receptor. Normally an integral-membrane protein, soluble IL2RA has been isolated and determined to result from extracellular proteolysis. Alternately-spliced IL2RA mRNAs have been isolated, but the significance of each is presently unknown.


Recombinant Human IL-2RA/CD25 Protein is produced by HEK293 cells expression system. The target protein is expressed with sequence (Glu22-Cys213) of human CD25/IL-2Ralpha (Accession #NP_000408.1) fused with a Fc, 6xHis tag at the C-terminus.

Measured by its binding ability in a functional ELISA. Immobilized human IL2 (Catalog: RP01039) at 2 µg/ml (100 µL/well) can bind human IL2RA with a linear range of 0.01-396.60 ng/mL

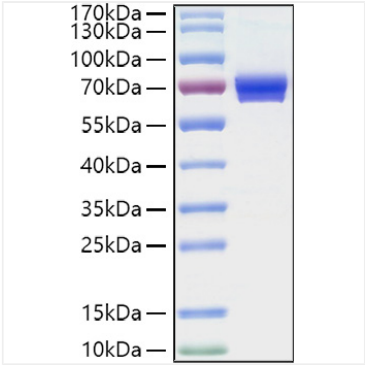
Store at -20°C. Store the lyophilized protein at -20°C to -80 °C up to 1 year from the date of receipt.
After reconstitution, the protein solution is stable at -20°C for 3 months, at 2-8°C for up to 1 week.
Avoid repeated freeze/thaw cycles.

 | 400-999-6126

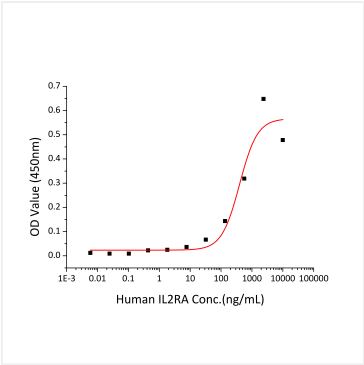
 | cn.market@abclonal.com.cn

 | www.abclonal.com.cn

Validation Data



Recombinant Human IL-2RA/CD25 Protein was determined by SDS-PAGE under reducing conditions with Coomassie Blue.



Immobilized human IL2 (Catalog: RP01039) at 2 µg/ml (100 µL/well) can bind human IL2RA with a linear range of 0.01-396.60 ng/mL