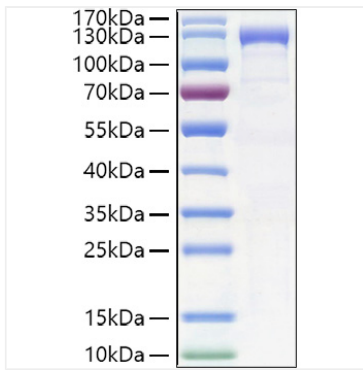
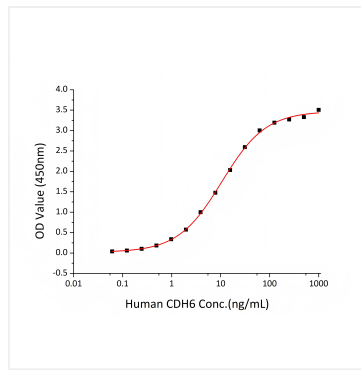


Validation Data



Recombinant Human CDH6/K-Cadherin Protein was determined by SDS-PAGE under reducing conditions with Coomassie Blue.



Measured by its binding ability in a functional ELISA. Immobilized Human CDH6 (Catalog: RP01406) at 1 ug/mL (100 μ L/well) can bind CDH6 Mouse mAb with a linear range of 0.06-10.6 ng/mL.