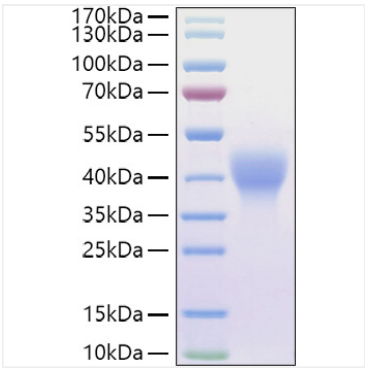
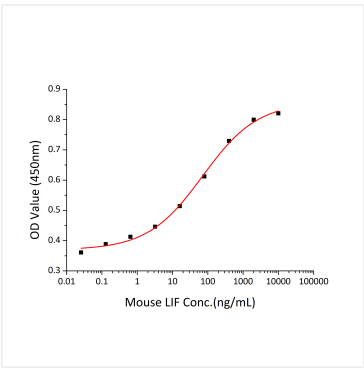


Validation Data



Recombinant Mouse Leukemia inhibitory factor/LIF Protein was determined by SDS-PAGE under reducing conditions with Coomassie Blue.



Recombinant Mouse Leukemia inhibitory factor/LIF stimulates cell proliferation assay using TF-1 Human erythroleukemic cells. The ED₅₀ for this effect is 35.675-142.7 ng/mL, corresponding to a specific activity of 7.00×10⁴~2.80×10⁴ units/mg.