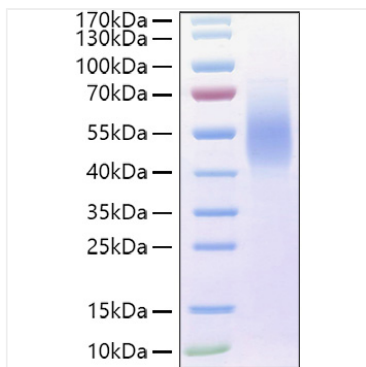
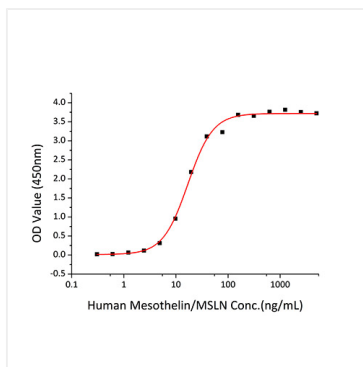


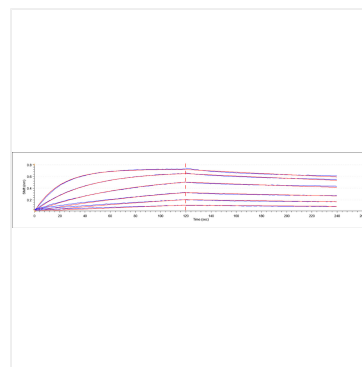
Validation Data



Recombinant Human MUC-16/CA125 Protein was determined by SDS-PAGE under reducing conditions with Coomassie Blue.



Immobilized Human CA125 at 5 $\mu\text{g/mL}$ (100 μL /well) can bind Human Mesothelin/MSLN with a linear range of 0.3-17 ng/mL.



Loaded Human Mesothelin/MSLN Protein, C-hFc&His (Catalog: RP01220) on ProA Biosensor, can bind Human CA125 Protein, C-His&Avi (Catalog: RP01417) with an affinity constant of 17.2 nM as determined in BLI assay (Gator).