

# Recombinant Human Ephrin-A1/EFNA1 Protein

**Catalog No.: RP01419** **Recombinant**

## Sequence Information

Species	Gene ID	Swiss Prot
Human	1942	P20827

### Tags

C-His

### Synonyms

B61; ECKLG; EFL1; EPLG1; LERK-1;  
LERK1;  
TNFAIP4;EFNA1;ECKLG;EFL1;EPLG1;LERK  
-1;LERK1;TNFAIP4;ephrin-A1

## Product Information

Source	Purification
HEK293 cells	> 95% by SDS- PAGE.

Calculated MW	Observed MW
20.20 kDa	26 kDa

### Endotoxin

< 0.1 EU/μg of the protein by LAL  
method.

### Formulation

Lyophilized from a 0.22 μm filtered  
solution of PBS, pH 7.4.

### Reconstitution

Centrifuge the vial before opening.  
Reconstitute to a concentration of  
0.1-0.5 mg/mL in sterile distilled water.  
Avoid vortex or vigorously pipetting the  
protein. For long term storage, it is  
recommended to add a carrier protein or  
stabilizer (e.g. 0.1% BSA, 5% HSA, 10%  
FBS or 5% Trehalose), and aliquot the  
reconstituted protein solution to  
minimize free-thaw cycles.

## Background

EPH-related receptor tyrosine kinase ligand 1 (abbreviated as Ephrin-A1) also known as ligand of eph-related kinase 1 or EFNA1, is a member of the ephrin (EPH) family. The Eph family receptor interacting proteins (ephrins) are a family of proteins that serve as the ligands of the Eph receptor, which compose the largest known subfamily of receptor protein-tyrosine kinases (RTKs). Ephrin-A1/EFNA1 and its Eph family of receptor tyrosine kinases are expressed by cells of the SVZ. Ephrin subclasses are further distinguished by their mode of attachment to the plasma membrane: ephrin-A ligands bind EphA receptors and are anchored to the plasma membrane via a glycosylphosphatidylinositol (GPI) linkage, whereas ephrin-B ligands bind EphB receptors and are anchored via a transmembrane domain. An exception is the EphA4 receptor, which binds both subclasses of ephrins. Ephrin-A1 and one of its receptor EphA2 were expressed in xenograft endothelial cells and also tumor cells and play a role in human cancers, at least in part by influencing tumor neovascularization.

## Basic Information

### Description

Recombinant Human Ephrin-A1/EFNA1 Protein is produced by HEK293 cells expression system. The target protein is expressed with sequence (Asp19-Ser182) of human Ephrin-A1/EFNA1 (Accession #NP\_004419.2) fused with a 6×His tag at the C-terminus.

### Bio-Activity

Measured by its binding ability in a functional ELISA. Immobilized Human EFNA1 at 1 μg/mL (100 μL/well) can bind Human Ephrin A1 Rabbit mAb with a linear range of 0.098-2.066 ng/mL.

### Storage

Store at -20°C. Store the lyophilized protein at -20°C to -80 °C up to 1 year from the date of receipt.

After reconstitution, the protein solution is stable at -20°C for 3 months, at 2-8°C for up to 1 week.

Avoid repeated freeze/thaw cycles.

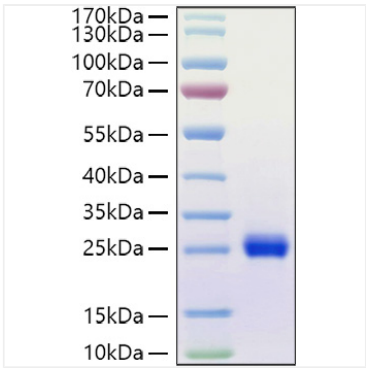
## Contact

☎ | 400-999-6126

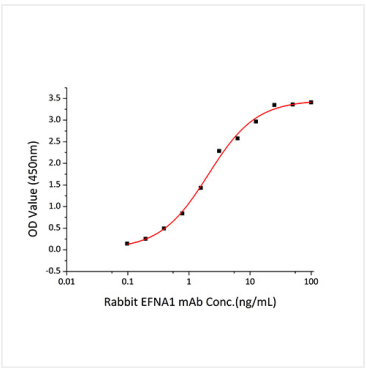
✉ | [cn.market@abclonal.com.cn](mailto:cn.market@abclonal.com.cn)

🌐 | [www.abclonal.com.cn](http://www.abclonal.com.cn)

Validation Data



Active Recombinant Human Ephrin-A1/EFNA1 Protein was determined by SDS-PAGE with Coomassie Blue, showing a band at 26kDa.



Immobilized Human EFNA1 at 1 µg/mL (100 µL/well) can bind Human Ephrin A1 Rabbit mAb with a linear range of 0.098-2.066 ng/mL.