

# Recombinant Human CD52 Protein

Catalog No.: RP01429 **Recombinant**

## Sequence Information

Species	Gene ID	Swiss Prot
Human	1043	P31358

### Tags

C-hFc&amp;Avi

### Synonyms

CD52;CDW52;EDDM5

## Product Information

Source	Purification
HEK293 cells	> 95% by SDS-PAGE.

Calculated MW	Observed MW
28.98 kDa	38-48 kDa

### Endotoxin

&lt;0.1EU/μg


### Formulation

Lyophilized from a 0.22 μm filtered solution of PBS, pH 7.4.

### Reconstitution

Centrifuge the vial before opening. Reconstitute to a concentration of 0.1-0.5 mg/mL in sterile distilled water. Avoid vortex or vigorously pipetting the protein. For long term storage, it is recommended to add a carrier protein or stabilizer (e.g. 0.1% BSA, 5% HSA, 10% FBS or 5% Trehalose), and aliquot the reconstituted protein solution to minimize free-thaw cycles.

## Contact

 | 400-999-6126 | [cn.market@abclonal.com.cn](mailto:cn.market@abclonal.com.cn) | [www.abclonal.com.cn](http://www.abclonal.com.cn)

## Background

CD52 / CDW52 is a small glycosylphosphatidylinositol (GPI) anchored glycoprotein. It has a mature peptide comprising only 12 amino acids and is abundantly expressed on human lymphocytes. From the clinical point of view this protein is an important target for therapeutic interventions aimed at leukocyte depletion in hematological malignancies and post-transplant immunosuppression. CD52 / CDW52 may play a role in carrying and orienting carbohydrate. It is an unusually good target for complement-mediated cell lysis.

## Basic Information

### Description

Recombinant Human CD52 Protein is produced by HEK293 cells expression system. The target protein is expressed with sequence (Gly25-Ser36) of human CD52 (Accession #NP\_001794.2) fused with a Fc, Avi tag at the C-terminus.

### Bio-Activity

Measured by its binding ability in a functional ELISA. Immobilized Human CD52 Protein at 5 μg/mL (100 μL/well) can bind SIGLEC10 with a linear range of 20.49-455.65ng/mL.

### Storage

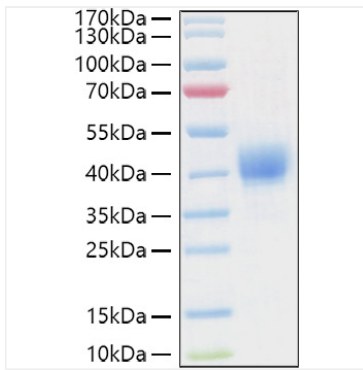
Store at -20°C. Store the lyophilized protein at -20°C to -80 °C up to 1 year from the date of receipt.

After reconstitution, the protein solution is stable at -20°C for 3 months, at 2-8°C for up to 1 week.

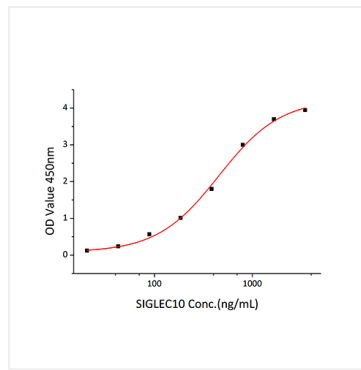
Avoid repeated freeze/thaw cycles.

## Validation Data

---



Recombinant Human CD52 Protein was determined by SDS-PAGE with Coomassie Blue, showing a band at 38-48kDa.



Immobilized Human CD52 Protein at 5  $\mu$ g/mL (100  $\mu$ L/well) can bind SIGLEC10 with a linear range of 20.49-455.65ng/mL.