

# Recombinant Human Guanylyl cyclase C/GUCY2C Protein

Catalog No.: RP01430 **Recombinant**

## Sequence Information

Species	Gene ID	Swiss Prot
Human	2984	P25092-1

### Tags

C-His&Avi

### Synonyms

GUCY2C;DIAR6;GC-C;GUC2C;MECIL;MUCIL;STAR

## Product Information

Source	Purification
HEK293 cells	> 95% by SDS-PAGE.

Calculated MW	Observed MW
48.66 kDa	60-90 kDa

### Endotoxin

Please contact us for more information.

### Formulation

Lyophilized from a 0.22 µm filtered solution of PBS, pH 7.4.

### Reconstitution

Centrifuge the vial before opening. Reconstitute to a concentration of 0.1-0.5 mg/mL in sterile distilled water. Avoid vortex or vigorously pipetting the protein. For long term storage, it is recommended to add a carrier protein or stabilizer (e.g. 0.1% BSA, 5% HSA, 10% FBS or 5% Trehalose), and aliquot the reconstituted protein solution to minimize free-thaw cycles.

## Contact

 | 400-999-6126

 | [cn.market@abclonal.com.cn](mailto:cn.market@abclonal.com.cn)

 | [www.abclonal.com.cn](http://www.abclonal.com.cn)

## Background

GUCY2C (Guanylyl Cyclase C), also known as heat-stable enterotoxin receptor, is a type I transmembrane protein of the guanylate cyclase (gc) family that signal by producing cGMP. Guanylate cyclase C (GUCY2C) and its hormones guanylin and uroguanylin have recently emerged as one paracrine axis defending intestinal mucosal integrity against mutational, chemical, and inflammatory injury. GUCY2C murine CAR-T cells recognized and killed human colorectal cancer cells endogenously expressing GUCY2C. Thus, we have identified a human GUCY2C-specific CAR-T cell therapy approach that may be developed for the treatment of GUCY2C-expressing metastatic colorectal cancer. GUCY2C may represent a new target for anti-obesity pharmacotherapy.

## Basic Information

### Description

Recombinant Human Guanylyl cyclase C/GUCY2C Protein is produced by HEK293 cells expression system. The target protein is expressed with sequence (Ser24-Gln430) of human GUCY2C/Guanylyl cyclase (Accession #NP\_004954.2) fused with a 6×His□Avi tag at the C-terminus.

### Bio-Activity

Measured by its binding ability in a functional ELISA. Immobilized Human GUCY2C at 1 µg/mL (100 µL/well) can bind GUCY2C Rabbit pAb with a linear range of 1-144 ng/mL.

### Storage

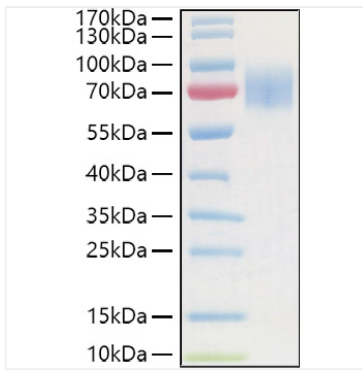
Store at -20°C. Store the lyophilized protein at -20°C to -80 °C up to 1 year from the date of receipt.

After reconstitution, the protein solution is stable at -20°C for 3 months, at 2-8°C for up to 1 week.

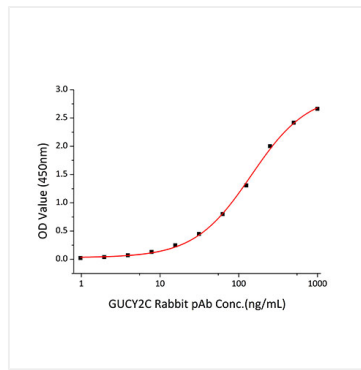
Avoid repeated freeze/thaw cycles.

## Validation Data

---



Recombinant Human Guanylyl cyclase C/GUCY2C Protein was determined by SDS-PAGE with Coomassie Blue, showing a band at 60-90kDa.



Immobilized recombinant Human GUCY2C at 1 $\mu$ g/mL (100  $\mu$ L/well) can bind GUCY2C Rabbit pAb with a linear range of 1-144ng/mL.