

Recombinant Mouse CD24 Protein

Catalog No.: RP01437 **Recombinant**

Sequence Information

Species	Gene ID	Swiss Prot
Mouse	12484	P24807

Tags

C-hFc

Synonyms

CD24;CD24A;FLJ22950;FLJ43543;MGC75043;CD24

Product Information

Source	Purification
HEK293 cells	> 95% by SDS-PAGE.

Endotoxin

<0.1EU/ μ g

Formulation

Lyophilized from a 0.22 μ m filtered solution of PBS, pH 7.4.

Reconstitution

Centrifuge the vial before opening. Reconstitute to a concentration of 0.1-0.5 mg/mL in sterile distilled water. Avoid vortex or vigorously pipetting the protein. For long term storage, it is recommended to add a carrier protein or stabilizer (e.g. 0.1% BSA, 5% HSA, 10% FBS or 5% Trehalose), and aliquot the reconstituted protein solution to minimize free-thaw cycles.

Contact

 | 400-999-6126 | cn.market@abclonal.com.cn | www.abclonal.com.cn

Background

The cluster of differentiation (CD) system is commonly used as cell markers in Immunophenotyping. Different kinds of cells in the immune system can be identified through the surface CD molecules associating with the immune function of the cell. There are more than 320 CD unique clusters and subclusters have been identified. Some of the CD molecules serve as receptors or ligands important to the cell through initiating a signal cascade which then alter the behavior of the cell. Some CD proteins do not take part in cell signal process but have other functions such as cell adhesion. Cluster of differentiation 24, also known as signal transducer CD24 or heat stable antigen CD24 (HSA), is a mucin-type glycosylphosphatidylinositol-linked glycoprotein expressed on the surface of B-cells, differentiating neuroblasts and many tumors. It is involved in molecular adhesion and metastatic tumor spread and serve as a normal receptor for P-selectin. The CD24 / P-selectin pathway could be important in disseminating tumor cells by facilitating the interaction with platelet and endothelial cells. It has also been considered as a tumor marker. High rate of CD24 expressions have been found in epithelial ovarian cancer, breast cancer, non-small cell lung cancer, prostate cancer and pancreatic cancer.

Basic Information

Description

Recombinant Mouse CD24 Protein is produced by HEK293 cells expression system. The target protein is expressed with sequence (Asn27-Gly53) of mouse CD24 (Accession #NP_033976.1) fused with a hFc tag at the C-terminus.

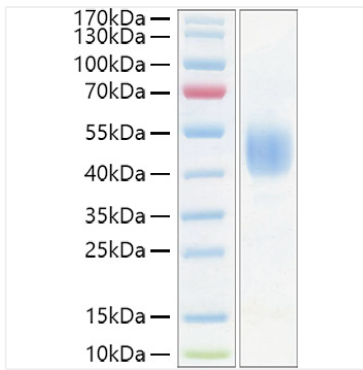
Bio-Activity

Measured by its binding ability in a functional ELISA. Immobilized Human CD24 (Catalog: RP01437) at 2 μ g/mL (100 μ L/well) can bind Human Siglec10 with a linear range of 40-900ng/mL.

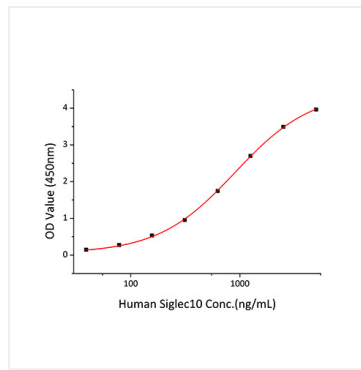
Storage

Store the lyophilized protein at -20°C to -80°C for long term. After reconstitution, the protein solution is stable at -20°C for 3 months, at 2-8°C for up to 1 week. Avoid repeated freeze/thaw cycles.

Validation Data



Recombinant Mouse CD24 Protein was determined by SDS-PAGE with Coomassie Blue, showing a band at 40-55kDa.



Immobilized Mouse CD24 (Catalog: RP01437) at 2 $\mu\text{g}/\text{mL}$ (100 $\mu\text{L}/\text{well}$) can bind Human Siglec10 with a linear range of 40-900ng/mL.