

# Recombinant Human MUC-16/CA125 Protein

Catalog No.: RP01444 **Recombinant**

## Sequence Information

Species	Gene ID	Swiss Prot
Human	94025	Q8WXI7

### Tags

C-hFc&amp;Avi

### Synonyms

CA125;MUC16;mucin-16

## Product Information

Source	Purification
HEK293 cells	> 95% by SDS-PAGE.

### Endotoxin

<0.1EU/ $\mu$ g

### Formulation

Lyophilized from a 0.22  $\mu$ m filtered solution of PBS, pH 7.4.

### Reconstitution

Centrifuge the vial before opening. Reconstitute to a concentration of 0.1-0.5 mg/mL in sterile distilled water. Avoid vortex or vigorously pipetting the protein. For long term storage, it is recommended to add a carrier protein or stabilizer (e.g. 0.1% BSA, 5% HSA, 10% FBS or 5% Trehalose), and aliquot the reconstituted protein solution to minimize freeze-thaw cycles.

## Contact

 | 400-999-6126 | [cn.market@abclonal.com.cn](mailto:cn.market@abclonal.com.cn) | [www.abclonal.com.cn](http://www.abclonal.com.cn)

## Background

The CA125, also known as the MUC16, is a mucin protein that may be found in type I transmembrane or secreted forms that are used monitor the progress of epithelial ovarian cancer therapy. The CA 125 molecule is almost certainly a glycoprotein with a predominance of O-linkages. It is heterogeneous with regard to both size and charge, most likely due to continuous deglycosylation of side chains during its life-span in bodily fluids. It exists as a very large complex (perhaps as much as 4 million daltons) under natural conditions.

## Basic Information

### Description

Recombinant Human MUC-16/CA125 Protein is produced by HEK293 cells expression system. The target protein is expressed with sequence (Gly12660-Met12923) of human CA125/MUC16 (Accession #NP\_078966.2) fused with a Fc, Avi tag at the C-terminus.

### Bio-Activity

Measured by its binding ability in a functional ELISA. Immobilized Mouse Mesothelin/MSLN at 2  $\mu$ g/mL (100  $\mu$ L/well) can bind Human CA125 with a linear range of 0.01-0.72 ng/mL.

### Storage

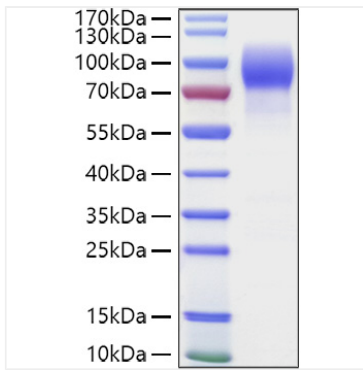
Store at -20°C. Store the lyophilized protein at -20°C to -80 °C up to 1 year from the date of receipt.

After reconstitution, the protein solution is stable at -20°C for 3 months, at 2-8°C for up to 1 week.

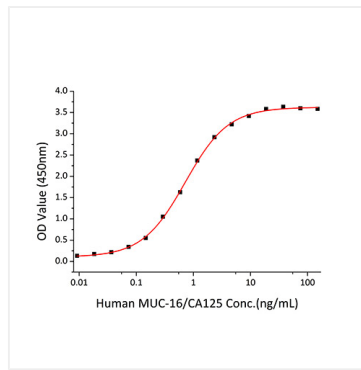
Avoid repeated freeze/thaw cycles.

## Validation Data

---



Recombinant Human MUC-16/CA125 Protein was determined by SDS-PAGE with Coomassie Blue, showing a band at 80-110kDa.



Immobilized Mouse Mesothelin/MSLN at 2  $\mu\text{g/mL}$  (100  $\mu\text{L}$ /well) can bind Human CA125 with a linear range of 0.01-0.72 ng/mL.