

Recombinant Mouse Mesothelin/MSLN Protein

Catalog No.: RP01448 **Recombinant**

Sequence Information

Species	Gene ID	Swiss Prot
Mouse	56047	Q61468-1

Tags

C-His

Synonyms

MSLN; Mesothelin; MPF; MSLN

Product Information

Source	Purification
HEK293 cells	> 95% by SDS-PAGE.

Calculated MW	Observed MW
34.99 kDa	40-50 kDa

Endotoxin

<0.1EU/μg

Formulation

Lyophilized from a 0.22 μm filtered solution of PBS, pH 7.4.

Reconstitution

Centrifuge the vial before opening. Reconstitute to a concentration of 0.1-0.5 mg/mL in sterile distilled water. Avoid vortex or vigorously pipetting the protein. For long term storage, it is recommended to add a carrier protein or stabilizer (e.g. 0.1% BSA, 5% HSA, 10% FBS or 5% Trehalose), and aliquot the reconstituted protein solution to minimize free-thaw cycles.

Contact

 | 400-999-6126 | cn.market@abclonal.com.cn | www.abclonal.com.cn

Background

The megakaryocyte potentiating factor belongs to the mesothelin family. This family is comprised of several mammalian pre-pro-megakaryocyte potentiating factor precursor (MPF) or mesothelin proteins. Mesothelin is a glycosylphosphatidylinositol-linked glycoprotein highly expressed in mesothelial cells, mesotheliomas, and ovarian cancer, but the biological function of the protein is not known. Megakaryocyte potentiating factor is highly expressed in mesotheliomas, ovarian cancers, and some squamous cell carcinomas (at protein level). It interacts with MUC16 and potentiates megakaryocyte colony formation in vitro. Megakaryocyte potentiating factor is secreted by several mesothelioma cell lines and is frequently elevated in the blood of patients with mesothelioma. Measurement of this protein may be useful in following the response of mesothelioma to treatment.

Basic Information

Description

Recombinant Mouse Mesothelin/MSLN Protein is produced by HEK293 cells expression system. The target protein is expressed with sequence (Asp298-Ser600) of mouse MSLN/Mesothelin (Accession #NP_061345.1) fused with a 6xHis tag at the C-terminus.

Bio-Activity

Measured by its binding ability in a functional ELISA. Immobilized Mouse Mesothelin/MSLN (Catalog: RP01448) at 2 μg/mL (100 μL/well) can bind Human CA125 (Catalog: RP01444) with a linear range of 0.01-0.72 ng/mL.

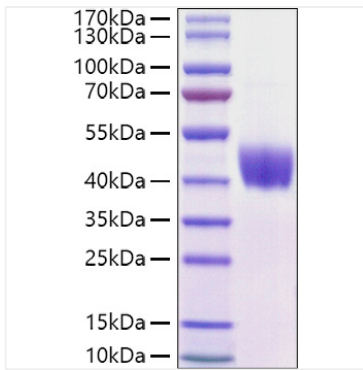
Storage

Store at -20°C. Store the lyophilized protein at -20°C to -80 °C up to 1 year from the date of receipt.

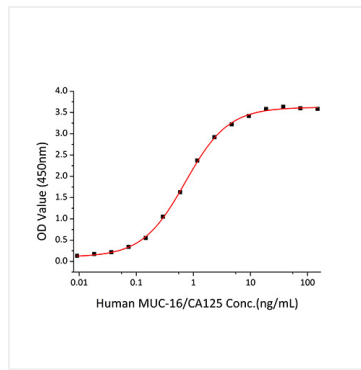
After reconstitution, the protein solution is stable at -20°C for 3 months, at 2-8°C for up to 1 week.

Avoid repeated freeze/thaw cycles.

Validation Data



Recombinant Mouse Mesothelin/MSLN Protein was determined by SDS-PAGE with Coomassie Blue, showing a band at 40-48kDa.



Immobilized Mouse Mesothelin/MSLN at 2 $\mu\text{g/mL}$ (100 μL /well) can bind Human CA125 with a linear range of 0.01-0.72 ng/mL.