

Recombinant Human LILRA6/ILT-8 Protein

Catalog No.: RP01453 **Recombinant**

Sequence Information

Species	Gene ID	Swiss Prot
Human	79168	Q6PI73

Tags

C-His&Avi

Synonyms

ILT5;ILT8;CD85b;ILT-8;LILRB3;LILRB6;LILRA6

Product Information

Source	Purification
HEK293 cells	> 95% by SDS-PAGE.

Endotoxin

<0.1EU/μg

Formulation

Lyophilized from a 0.22 μm filtered solution of PBS, pH 7.4.

Reconstitution

Centrifuge the vial before opening. Reconstitute to a concentration of 0.1-0.5 mg/mL in sterile distilled water. Avoid vortex or vigorously pipetting the protein. For long term storage, it is recommended to add a carrier protein or stabilizer (e.g. 0.1% BSA, 5% HSA, 10% FBS or 5% Trehalose), and aliquot the reconstituted protein solution to minimize freeze-thaw cycles.

Contact

 | 400-999-6126 | cn.market@abclonal.com.cn | www.abclonal.com.cn

Background

The LILRs are a family of receptors that regulate the activities of myelomonocytic cells. LILRB3 and LILRA6 represent a pair of inhibitory/activating receptors with identical extracellular domains and unknown ligands. LILRB3 (ILT5) and LILRA6 (ILT8) are highly polymorphic receptors with similar extracellular domains. LILRA6 can signal through association with an activating adaptor molecule, FcRγ, which bears a cytoplasmic tail with an immunoreceptor tyrosine-based activation motif. Analysis of mRNA expression in the major fractions of PBMCs showed that LILRA6 is primarily expressed in monocytes, and its expression level correlates with copy number of the gene.

Basic Information

Description

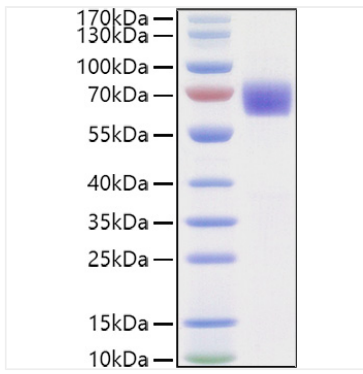
Recombinant Human LILRA6/ILT-8 Protein is produced by HEK293 cells expression system. The target protein is expressed with sequence (Gly24-Asn447) of human LILRA6/CD85b/ILT8 (Accession #CCDS42610.1) fused with a 6×His□Avi tag at the C-terminus.

Bio-Activity

Storage

Store at -20°C. Store the lyophilized protein at -20°C to -80 °C up to 1 year from the date of receipt. After reconstitution, the protein solution is stable at -20°C for 3 months, at 2-8°C for up to 1 week. Avoid repeated freeze/thaw cycles.

Validation Data



Recombinant Human LILRA6/ILT-8 Protein was determined by SDS-PAGE with Coomassie Blue, showing a band at 65-75kDa.